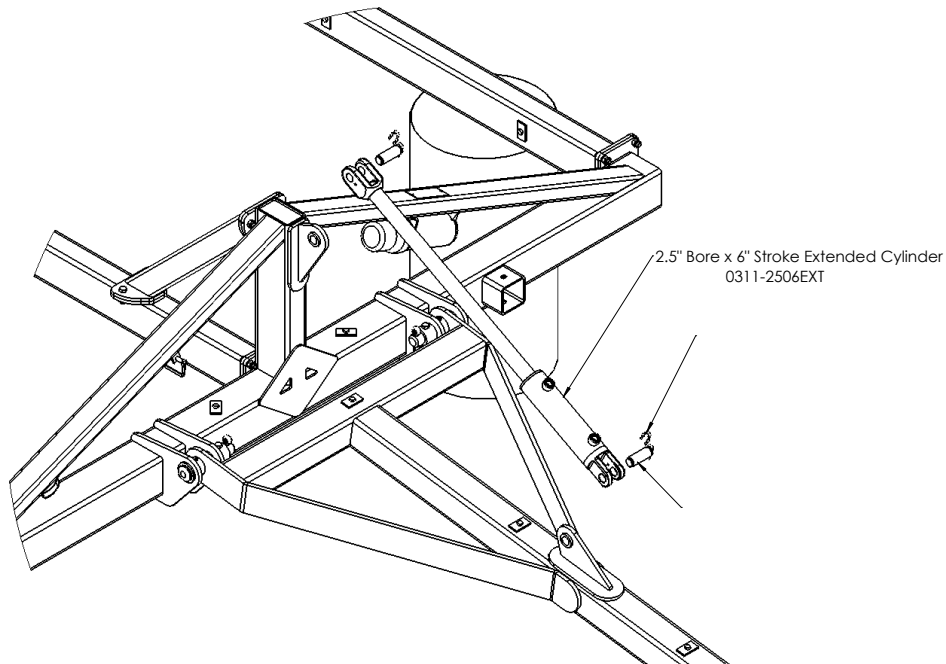


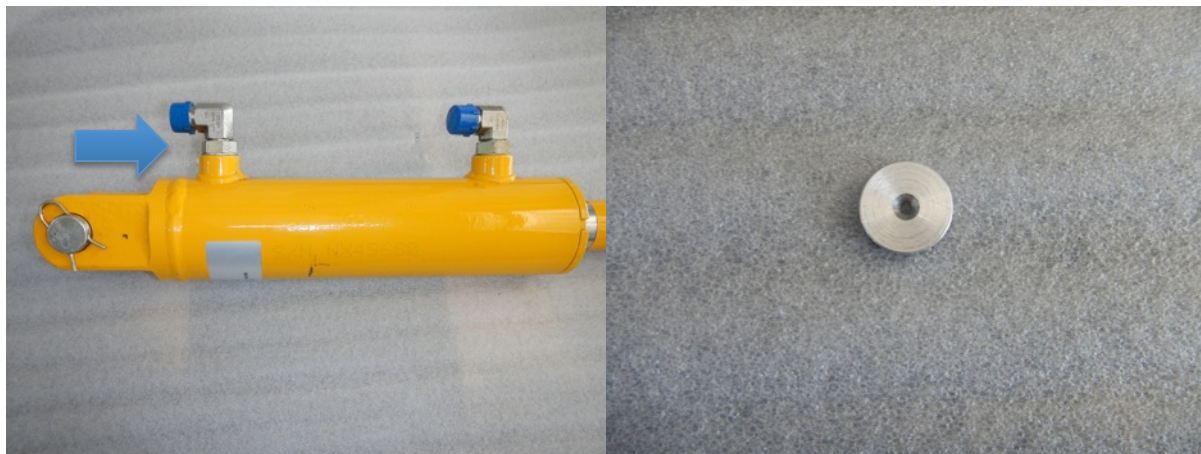
Title: Kelly Smoother Hitch Cylinder Orifice

Page 1 of 2



A flow reducing orifice needs to be fitted to the extend (base) end of the Hitch cylinder to prevent sudden movement when operating the levelling cylinder.

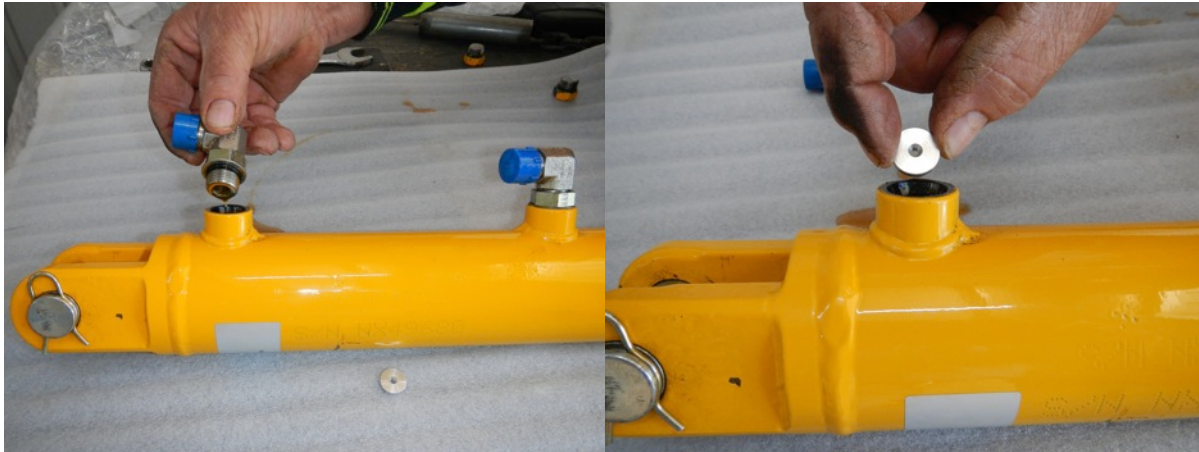
**This orifice MUST be fitted for SAFE operation of the Kelly Smoother.**



Before installing the cylinder. Part no. 0311-2506EXT, an orifice 8UNO-RES-FIX-2 must be fitted to the extend port.

Title: Kelly Smoother Hitch Cylinder Orifice

Page 2 of 2



Remove the 8UNO to 8JIC elbow from the extend port.

Insert the supplied orifice. It will sit against the inner shoulder of the port, inside the threaded fitting.



This picture shows the orifice in place.

Re fit the UNO – JIC elbow and tighten.