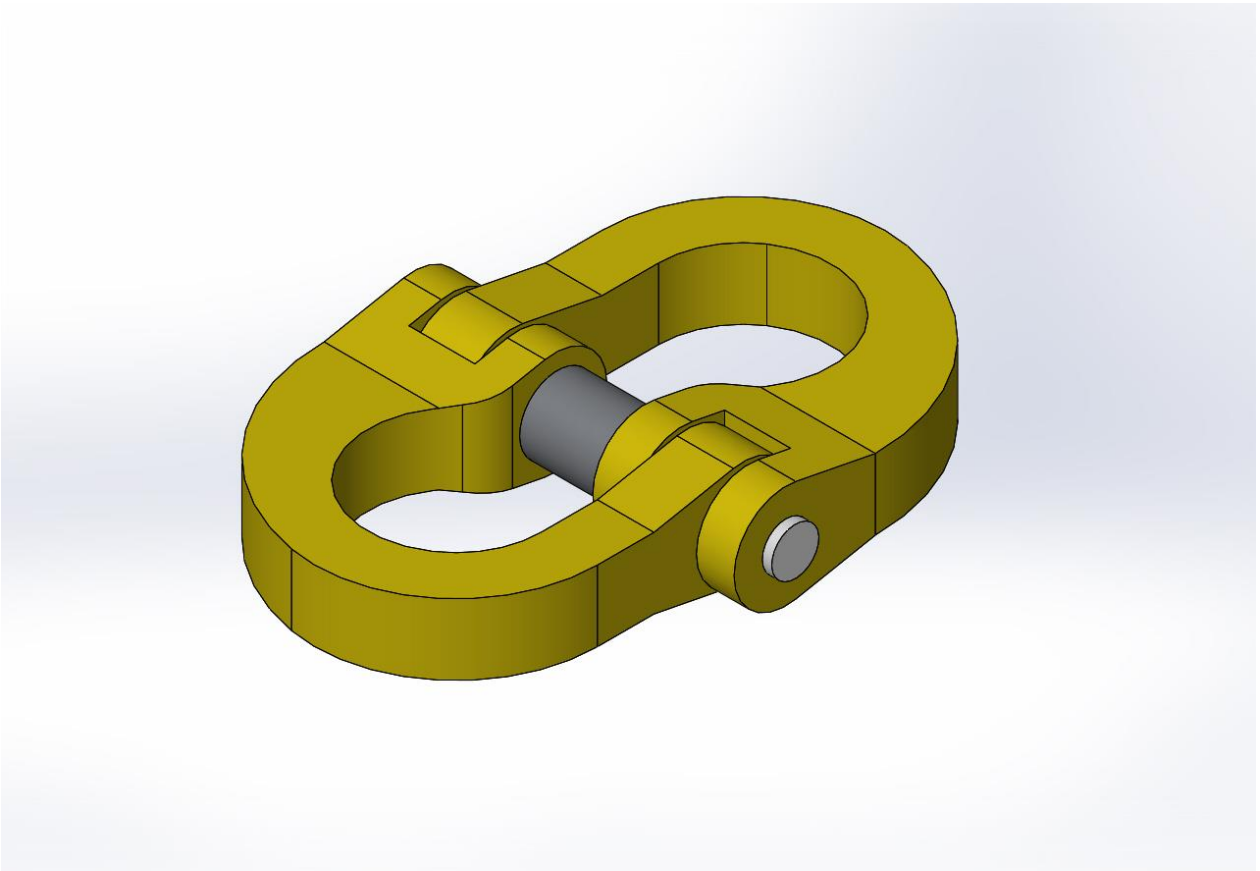


### Replacement Height Adjustment Chains – Model 46

Page 1 of 2

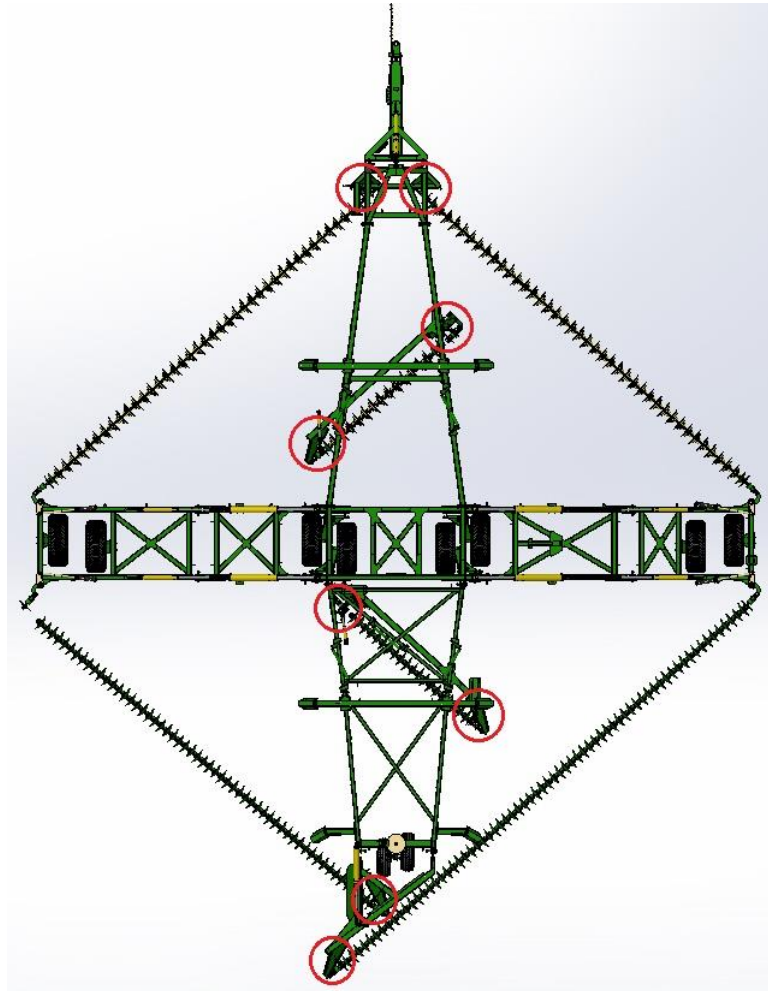
Prior to December 2017 the Model 46 height adjustment chain (part number 0801-20MCA) was fitted with an 8mm connecting link (part number 0801-CMAH08N) as shown below. In certain instances this component has been shown to develop fatigue cracking and potentially fail.



Components with a higher load rating (part number 0801-CMAH13N) have therefore been issued to replace the affected links. Each machine has 8 links which require replacement as shown in the schematic below.

### Replacement Height Adjustment Chains – Model 46

Page 2 of 2



The height adjustment chains should be removed from the machine in order to facilitate replacement of the link. The old component should be held securely in a vise and disassembled by knocking out the pin using a punch. The replacement component should be re-assembled in the same manner, with the chains then being re-assembled onto the machine.