

# KELLY



**Better Tillage. Better Tomorrow.**



# Kelly... ... inspired by community.



Kelly Tillage is a family business with strong community values. We believe in servicing our customers well, caring for our staff and ensuring that our products contribute to sustainable agriculture.

It is our aim to have satisfied customers promoting our products and contributing to our continued improvement.

Our staff are critical members of the Kelly Tillage team and their dedication and pride is demonstrated in each and every product we sell.

Sustainable agriculture for us means improvements in soil structure and productivity, build up of soil carbon, best use of soil moisture, integrated weed management and improved economic margins.

We thank you for showing an interest in our products. If there is anything the team or I can do for you, please do not hesitate to contact us.

A handwritten signature in black ink, appearing to read 'Shane Kelly'.

**Shane Kelly**

Scan the QR CODE to  
see the full Kelly story.



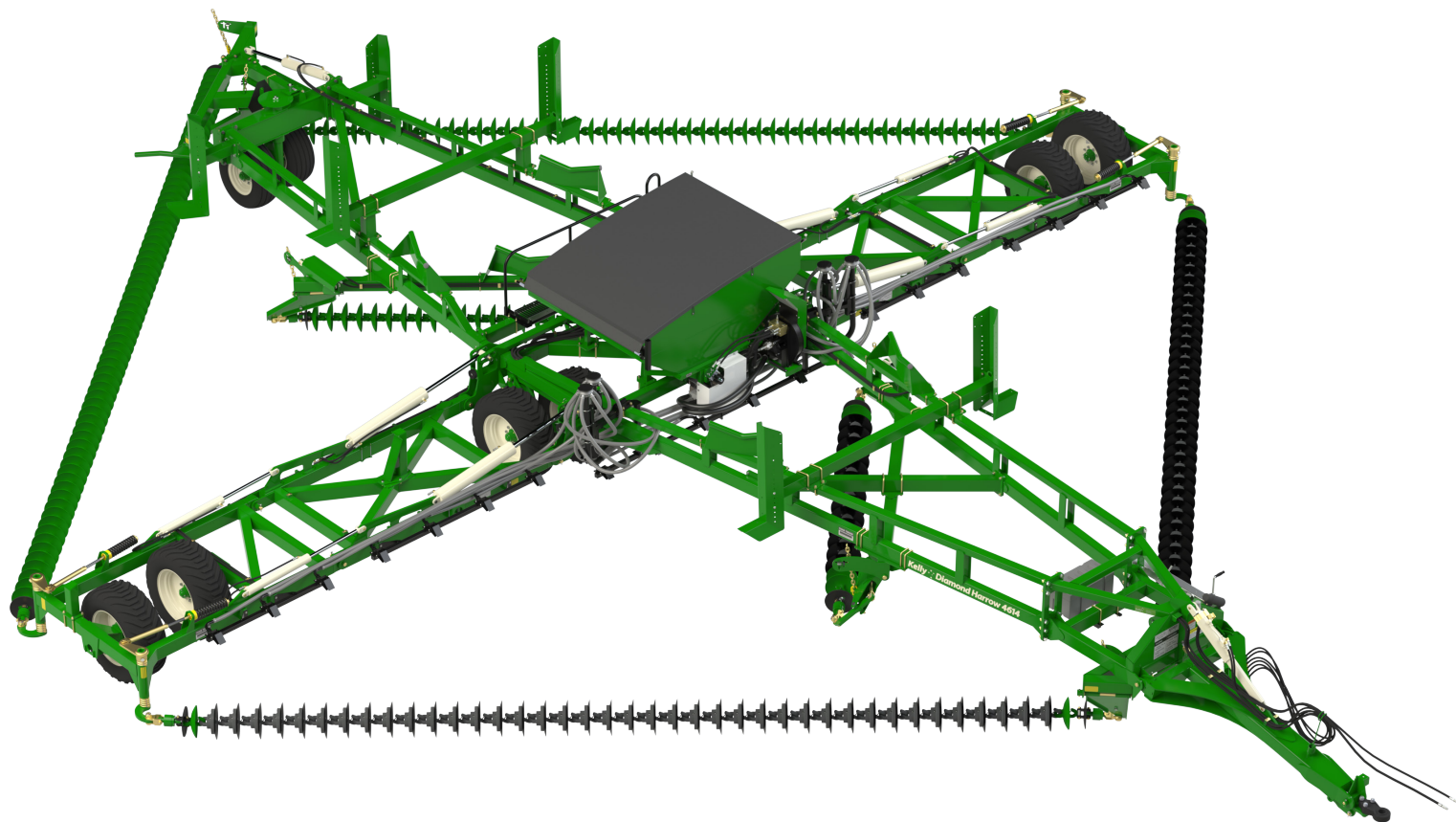




Kelly Tillage is located on the family farm, 6 miles south of Booleroo Centre in the northern agricultural region of South Australia. Nestled in the foot hills of the rugged and picturesque Flinders Ranges, Booleroo Centre has a long history of agricultural innovation.

The Kelly family connection with this area stretches back to 1875 when our forefathers settled on the farm where our factory now stands.

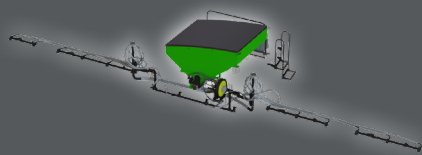
# One machine for year-round tillage



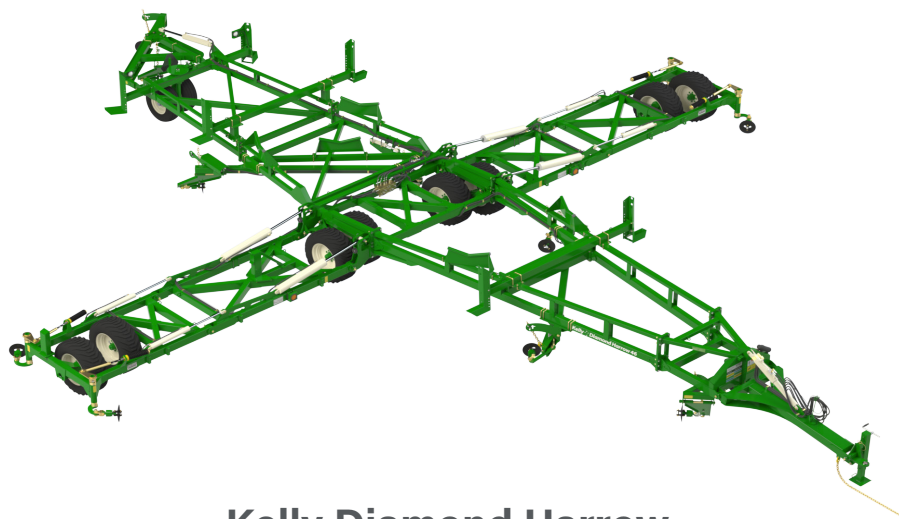
## The Kelly Tillage System

### Kelly Seeder (Optional)

This 80 cu ft airseeder unit is integrated on the Model 4614 only. Aftermarket seeders can be fitted to all models. Scan the QR code to learn more about seeding cover crops with the Kelly Tillage system.







**Kelly Diamond Harrow**



K4 Disc Chain



CL1 Disc Chain



CL2 Disc Chain



Spiked Disc Chain



W36 Disc Chain

**Kelly Disc Chain**

## Meet the Kelly Tillage System

Whether it's residue management, weed control, moisture management or creating that perfect seedbed prior to planting, the unique diamond shaped Kelly Tillage System offers a wide array of ground engaging discs to satisfy your year round tillage requirements.

The Kelly Seeder provides enormous cost saving benefits through one pass broadcasting and incorporation.

With a reputation for strength and reliability, the Kelly Tillage System is versatile and tough enough for every application.



# Redefining

Residue management, weed control, seedbed preparation and herbicide  
To learn more visit



## Residue Management

The Kelly Tillage System can chop and split the residue into smaller lengths, exposing the unprotected inner parts to moisture and microbes.

The organic matter layer protects the soil from wind and water erosion and moderates temperature fluctuations, providing the ideal environment for decomposition to occur while adding nutrients and building soil structure.



## Weed Control

Kelly Disc Chains control weeds in two ways. Firstly, they uproot existing weeds and leave them on the surface to die. Secondly, the shallow scarifying action stimulates weed seeds to germinate and keeps them near the topsoil where their viability degrades quickly.

Reducing the weed seed bank using shallow tillage is a key tool in the fight against herbicide resistance.



# Tillage

incorporation are important factors in modern farming practices.  
[www.kellytillage.com](http://www.kellytillage.com)



## Seedbed Preparation

Kelly Disc Chains work the surface of the field, smoothing and leveling while creating a layer of tilth covered with a protective mulch of crop residue.

The light shallow action of the harrow preserves moisture near the surface. Planter accuracy is at its very best because of the smooth, consistent surface preparation. Optimal preparation leads to optimal seedbeds, which gives you the best chance of optimal crop establishment.



## Herbicide Incorporation

The diamond-shaped layout and versatile Disc Chain configuration provides even soil levelling and distribution. The shallow working nature of Kelly Discs make them ideal for incorporation of herbicides and fertilisers, both liquid and granular.

Try using the Kelly Tillage System to incorporate after broadcasting, or use our mounted airseeder unit for a quick and efficient "one pass" application.



# Kelly Chains for

Having multiple chain types on your Kelly Tillage System



**CL2 Disc Chain**  
**CL75/25/8**

A concave replaceable disc mounted in a heavy cast steel boss with a hook and eye to link together.

The sharp disc provides penetration while the weight and shape of the boss keep the disc cutting and controls the working depth. Heavy residue management and reliable weed control make this our most powerful option.

Weight: 75lb/ft  
Disc spacing: 8"



**K4 Disc Chain**  
**K4 50/25/6**

A mid-weighted replaceable disc built for enhanced weed control in the loam range of soils.

The sharp edge of the K4 disc pulls weeds from the soil, flipping them over and leaving them on the surface to die. Farmers using this method have reported over 90% reductions in weed density.

Weight: 50lb/ft  
Disc spacing: 6.3"



**CL1 Disc Chain**  
**CL47/35/7**

The most versatile Kelly Disc Chain, the CL1 is a concave disc made from hardwearing cast steel alloy with a hook and eye to link together.

The CL1 is the ideal tool for residue management, weed control, levelling soil and working at just the right depth create the perfect seedbed.

Weight: 47lb/ft  
Disc spacing: 7"

Ground engaging tools are warranted against faulty material and workmanship for 50,000 acres.  
Replaceable cutting disc blades are warranted against faulty materials and workmanship only.



# all situations

will help you tackle all your year-round tillage needs



## Spiked Disc Chain SD49/27/5

Having 10 spikes per disc and 5" disc spacing gives this heavy duty Spiked Disc Chain real effectiveness.

The Spiked Disc Chain is very effective at removing weeds, making it an ideal tool for pre or post seeding clean up. The shallow working depth and combing action means the Spiked Discs are light to pull and cover acres quickly.

Weight: 49lb/ft  
Disc spacing: 5"



## W36 Disc Chain W36/25/7

A lightly curved disc made from a hardened wear resistant steel plate, welded to a heavy chain.

The W36 Disc Chain is our wet weather specialist. Used alone or in combination with the CL1, the smooth shallow disc surface performs in wet and sticky soils like nothing else.

Weight: 36lb/ft  
Disc spacing: 7"

## What's in a name?

Each machine has a front and a rear set of Disc Chains, which can be matching or different.

The sub-heading of each Disc Chain describes its unique characteristics, as displayed by the below example:

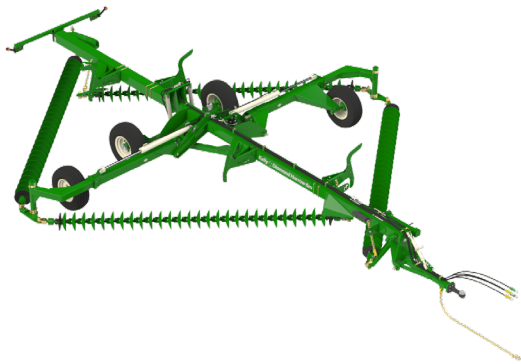
### CL1 Disc Chain: CL47/35/7

CL	Cast Link
47	47lb per foot
35	35° disc concavity
7	7" disc spacing

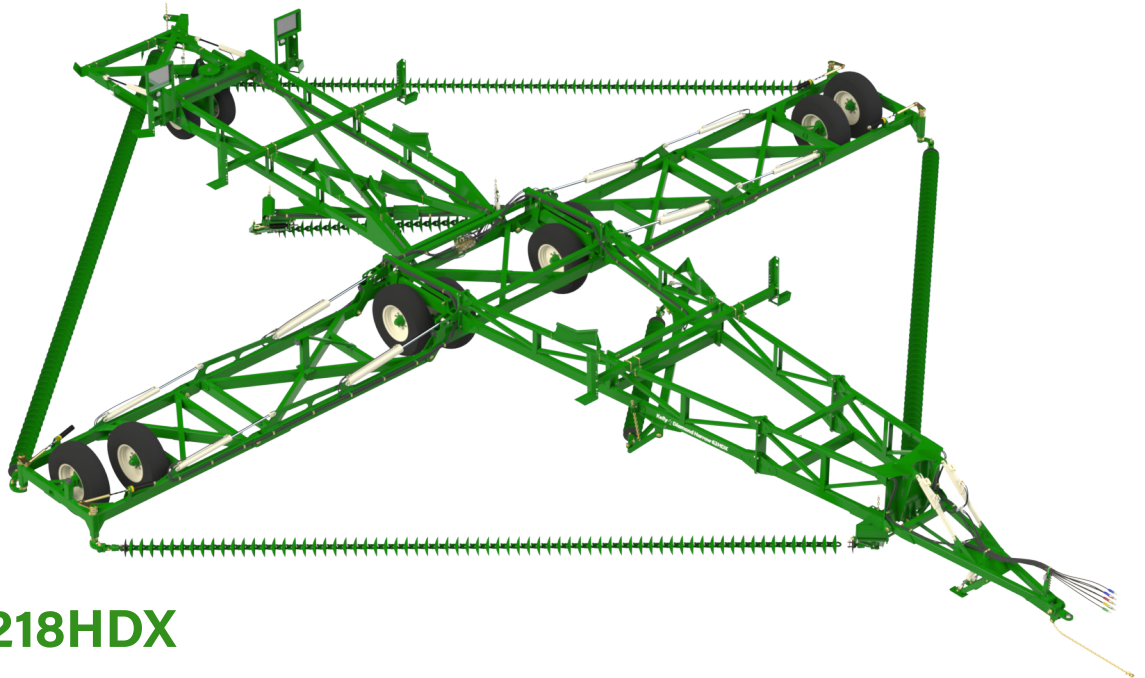


Scan the QR CODE to see the full Kelly Disc Chain range.

No farm too **big** or too small!



From Model 2006...



... to Model 6218HDX



# Model Range and Specifications

Model	Cut Width	Transport Width	Transport Height	Transport Length	Approx. Minimum Power Required (hp/kW)
2006	20'10"	7'11"	12'10"	34'	120hp/90kW
3009	29'6"	11'5"	13'5"	39'5"	150hp/110kW
4012	39'2"	11'3"	12'9"	46'10"	200hp/150kW
4614	45'10"	12'9"	12'11"	55'12"	230hp/170kW
6218HDX	59'2"	16'5"	15'7"	71'12"	310hp/230kW

Register your machine within 2 months to receive an additional 12 months warranty.

To find your local dealer contact [sales@kellytillage.com](mailto:sales@kellytillage.com)

Scan the QR CODE to see the full Kelly Tillage System range.



# Customer Testimonials



## **Could farm only using the Kelly**

I farm 6,000 acres of rice and soybeans with my father and brother. The Kelly Tillage System is the main tillage tool that works well in wet gumbo and sandy grounds.

We believe we could farm using only a Kelly Tillage System and Planter.

***Nathan Fuller, Oil Trough AR***



## **A great investment for the farm**

It folds up, it transports easily, we take it approximately 114 to 140 miles to our three different farms down in Greenfield, Tennessee. It gets on the ground early, doesn't require a lot of maintenance, excellent tool to dry your ground out with.

We've had a lot of success with this tool and for anyone who thinks about buying one of these, it would be a really good investment on the farm.

***Jeffery Brashears, Cadiz KY***



“

## **The Kelly Tillage System fits in well**

We've been using the Kelly Tillage System since 2015, and it's a product that has given us really good service. An immediate benefit is a lot of acres for a lot less horsepower, and the wear has been phenomenal.

The cost per acre is a big deal to us as we're doing a lot more cover crops and it really fits in really well.

***Davis Farms, Cunningham KY***

“

## **I wouldn't farm without one**

We purchased a Kelly Diamond about five years ago when it was really muddy and that's the only thing that got us through the year. Since then we've upgraded to the new model, and it's one of our only tillage tools we use anymore.

As far as I'm concerned I wouldn't farm without one.

***Aldo Smaniotto, IA***



Scan the QR CODE for more testimonials  
from Kelly customers around the world.

# Case Study: Lance Wise

**Farmer:** Lance Wise, Queensland, Australia

**Farm:** 4070 ac, black clay and red ridge soils

**Crops:** sorghum, wheat, barley, chickpeas, mung beans

**Kelly Model:** 3009 & 4012

**Disc Chains:** CL1, CL2, Spiked Disc



Lance Wise has four Kelly harrows (two 3009 and two 4012 models), which he uses on his own farm as well as renting them out to others as part of his dry hire business. Two machines (one of each model) are fitted with CL1 Disc Chain front and rear, for a more moderate and versatile approach. The other two machines have CL2 Disc Chain front and Spiked Disc Chain on the rear; the sharp-edged CL2 discs provide more aggressive weed control, while the spiked discs leave a coarser finish which is more resistant to erosion.

Lance Wise first purchased a Kelly as a way to supplement his weed control. He uses the disc chain together with herbicide as a cheap 'double knock' that doesn't contribute to chemical resistance. This process helps him to kill a

higher percentage of weeds at a lower cost. The Kelly has been effective at controlling herbicide resistant feathertop Rhodes grass and fleabane, especially on Wise's black clay soils.

Wise has found that the Kelly harrow kills 85-90% of weeds when used before spraying herbicide. After a light spray though, weed kill goes up to 99%. Since integrating the Kelly into his weed control program Wise has been able to cut out a total of 3-4 sprays per year, and weed pressure on his farm has decreased significantly.

Wise also uses the Kelly to help soil moisture levels. Improving water retention is the biggest challenge for Wise, who has begun to use sub-soil ripping to increase water holding capacity. The Kelly aids in this process by levelling the field

after ripping, mitigating damage to the seedbed and increasing the tilth.

## Key Findings:

- A combination of shallow surface tillage and sub-soil ripping has led to reduced weed pressure and increased water retention.
- An integrated approach to weed control has reduced weed pressure and allowed Wise to cut out 3-4 sprays each season.
- Levelling the seedbed with a Kelly harrow has increased working speed for all field operations.
- Managing residue with the Kelly harrow has led to improvements in crop establishment.



# Case Study: Bernd Richter

**Farmer:** Bernd Richter, Eastern Germany

**Farm:** 170 ac, sand to loam soils

**Crops:** peas, rapeseed, wheat, barley, rye

**Kelly Model:** 2006

**Disc Chains:** CL1



The Kelly harrow is used for a wide range of purposes on the Richter farm, including controlling weeds and cover crops, preparing a seedbed in tougher conditions and managing residue (especially rapeseed). Richter feels that the CL1 Disc Chain is best suited to dry and normal conditions in soil that isn't too heavy. He has also been trialing rear-fitted Spiked Disc Chain in combination with the front CL1, and feels that the Spiked Discs are ideal for better aeration of the soil and for creating a seedbed that isn't too fine.

The Kelly Tillage System has increased overall productivity on the Richter farm. Richter's Kelly harrow uses around a third of a gallon of fuel per acre; half as much as the cultivator that he used previously. With a 7-9mph working

speed, the Kelly covers 15-20 acres every hour. As a direct result of the higher working speed and lower fuel and labor expenses, Richter is now able to make two passes across the field where he previously made one, at the same cost.

Richter's maintenance costs are also dramatically lower with the Kelly harrow than they were for the cultivator.

A surprise benefit that Richter mentions is a result of the level seedbed that the Kelly harrow creates for planting. Having flat and even fields has allowed planters and drills to work at higher speeds, increasing productivity and reducing planting losses. "The driver of the harvester praised our flat, bump-free surface," says Richter. Having a smoother seedbed also led to improvements

in crop establishment, causing Richter's pea crop to grow more evenly.

## Key Findings:

- Richter states that the biggest problem on his farm is water retention. "What we try to do is hold it inside the ground. Since we got a Kelly harrow we stopped working deep during the hot and dry months."
- Cutting back on chemical application and making heavy use of ground cover have made the soil more resilient.
- A concerted effort has been made to minimise field traffic, significantly reducing compaction and operating costs.

# Machine

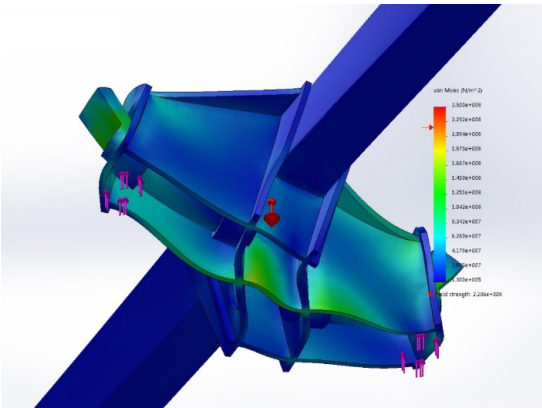


## Swivel Bearings

**With only 12 swivel bearings on the Kelly Diamond Harrow, maintenance and breakdowns are minimized.**

The smooth machined housing of our reliable and serviceable swivel units reduces wrapping.

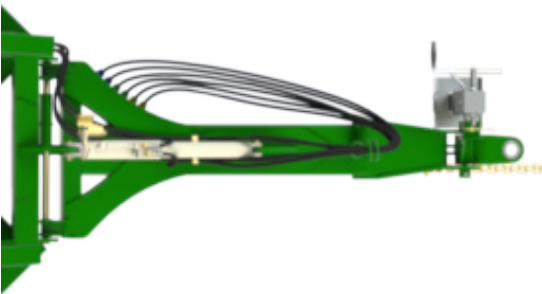
- 10,000 acre/12 month wear warranty
- Fully rebuildable with kit that includes bearings and seals
- High-quality swivel bearings sourced from SJL Engineering



## Frame

**High grade materials are processed to produce strong and durable fabrications.**

Each year millions of acres of experience helps to keep our products ahead of the game. Our designs are analyzed using Finite Element Analysis (FEA) to ensure they can withstand the stresses and rigors of years of use. We back this up with extensive practical testing to ensure that the product you see will perform as expected.



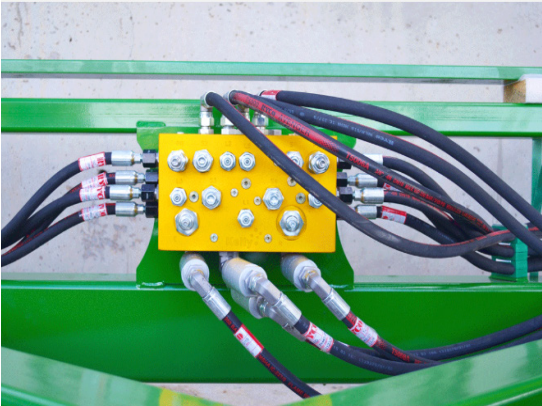
## T Bar Hitch

**Strong and reliable T Bar Hitch**

- The T Bar Hitch design reduces the turning circle
- Increased width improves frame strength
- Available on the 2006, 3009, 4012 & 4614 models.



# Features



## Hydraulic Fold

**Folds only from tractor seat - user friendly.**

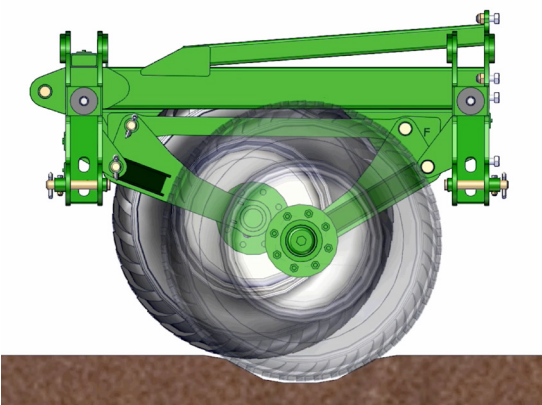
Our hydraulic fold system allows farmers to move from road to field in less than three minutes. These customized manifolds incorporate safety features for burst protection and operator safety. High quality Ryco hose and fittings are used exclusively.



## Tires

**Increasing demand on our machines has led us to offer a range of wheel and tire options.**

Heavy-duty tires provide the most accurate field setting and flotation, giving the smoothest possible finish.



## Load Sharing Axle (Model 4614 and 6218HDX Only)

The dual wheels are fitted onto the center frame with unique, compact ***load sharing axles***.

This ensures the load is shared throughout the machine, resulting in a smooth pass on the road and field.



## Kelly Tillage

PO Box 100

Booleroo Centre, South Australia 5482



[sales@kellytillage.com](mailto:sales@kellytillage.com)



[www.kellytillage.com](http://www.kellytillage.com)

### United States

Phone: +1 417 865 2100

Email: [sales@kellytillage.com](mailto:sales@kellytillage.com)

### Canada West

*Representative:*  
*Adair Sales & Marketing*

Phone: +1 306 773 0996

Email: [info@adairreps.com](mailto:info@adairreps.com)

### Canada East

*Representative:*  
*Leading Edge Equipment*

Phone: +1 888 424 9112

Email: [wayne@leadingedgeequipment.ca](mailto:wayne@leadingedgeequipment.ca)

# Better Tillage. Better Tomorrow.