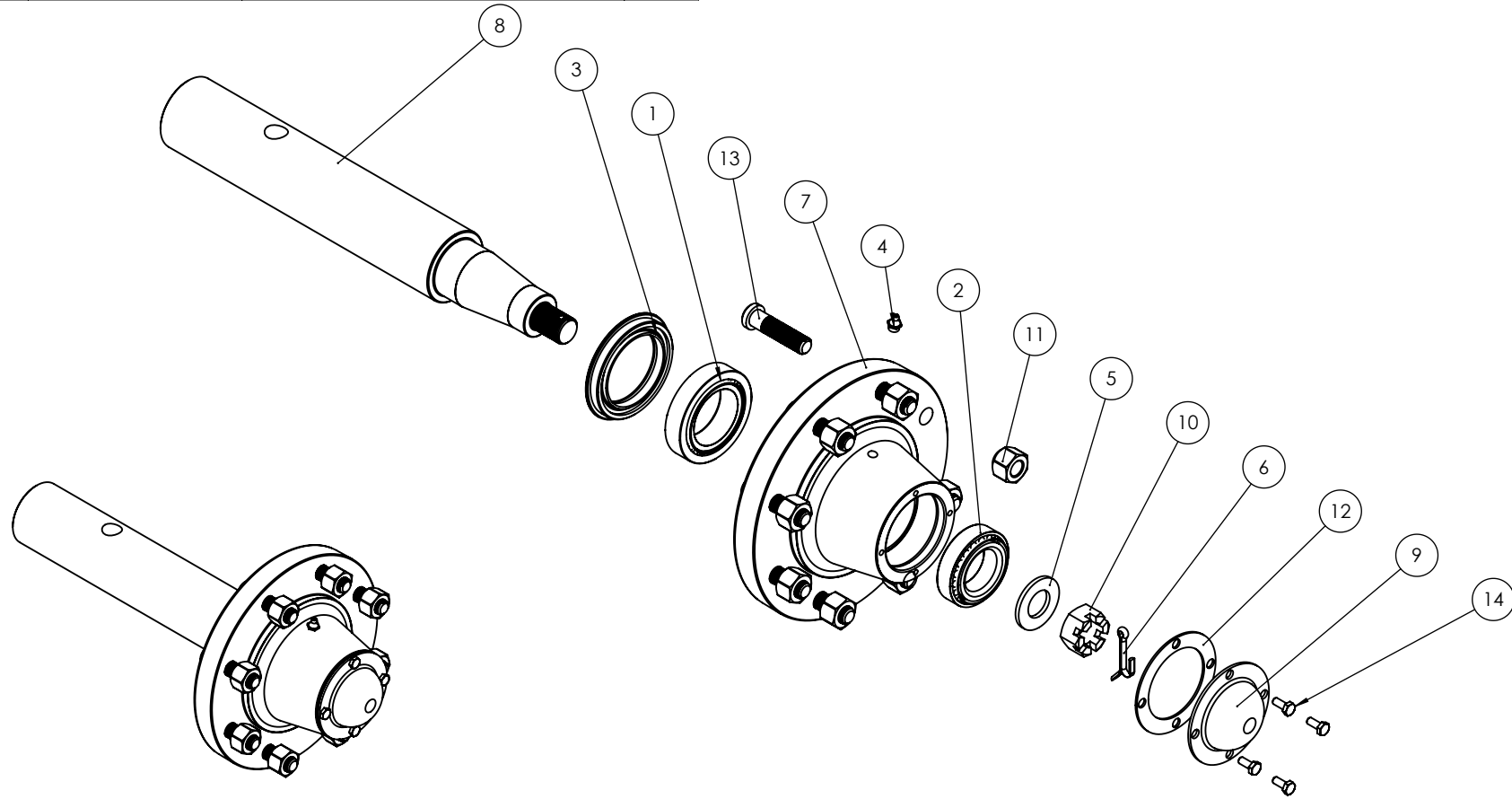


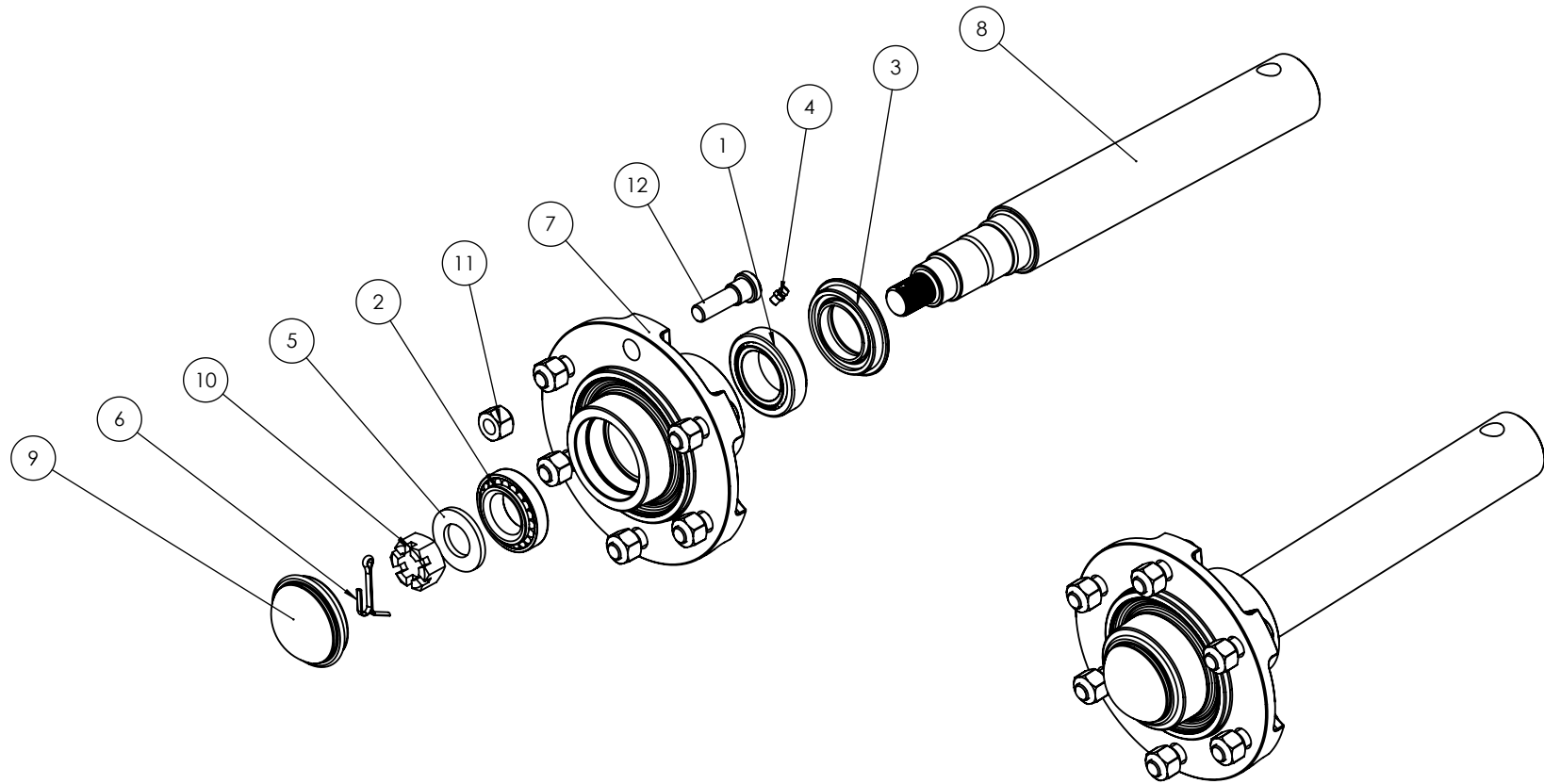
ITEM NO.	PART NUMBER	DESCRIPTION	QTY.
1	0111-JLM506849-10	Bearing JLM506849/10 Cone/Cup	1
2	0111-LM501349-10	Bearing LM501349/10 Cone/Cup	1
3	0121-P602141	Seal 2.75 x 3.76 x .44	1
4	0181-GN1-8	Grease Nipple 1/8" BSP	1
5	0232-F1	Washer Flat 1"	1
6	0261-PINC550	Cotter Pin M5 x 50	1
7	0731-H6080067	GKN 6T 8 on 8" Hub only	1
8	0732-LS96 30M-24	GKN 6T 2-3/4" x18.736" Stub/Spindle	1
9	0741-D-CAPGKN6T	4 X 3.375" PCD Bolt-on Dust Cap	1
10	0741-NCAST1	Castle Nut 1" x 14	1
11	0741-NW5-8-18	Wheel Nut 5/8-18 UNF 90 deg	8
12	0741-PCDHCG	PCD Hub Cap Gasket 4 x 3.375"	1
13	0741-WS5-8-18	Wheel Stud 5/8-18 UNF x 2-1/2	8
14	0212-14-58	1/4" X 5/8" UNC Grade 5 ZP BOLT	1
15	0212-1-4##	1/4" X 5/8" UNC Grade 5 ZP BOLT	3

GKN Brand: Used on the center frame and wings for ALL machines, as well as on 4614 jockey wheel. Interchangeable with **Northfield Brand**



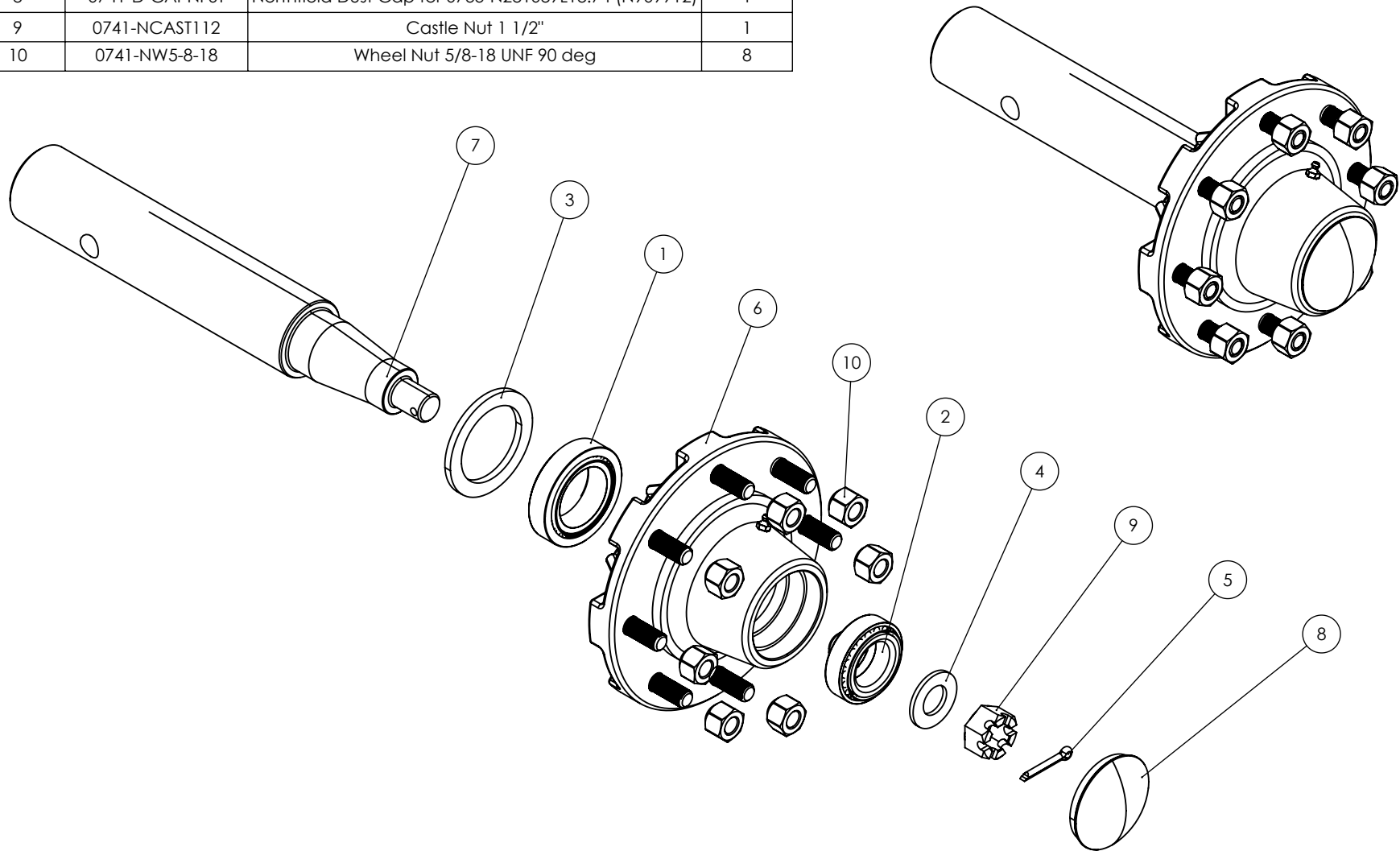
ITEM NO.	PART NUMBER	DESCRIPTION	QTY.
1	0111-JL69349-10	Bearing JL69349/10 Cone/Cup	1
2	0111-LM67048-10	Bearing LM67048/10 Cone/Cup	1
3	0121-P602144	Seal 1.63 x 2.57 x .31	1
4	0181-GN1-4	Grease Nipple 1/4" UNF	1
5	0232-F7-8	Washer Flat 7/8"	1
6	0261-PINC450	Cotter Pin M4 x 50	1
7	0731-H8880093	GKN 3T 6 on 6" Hub only	1
8	0732-LS9631J-26	GKN 4T 2" x 15.766" Stub/Spindle	1
9	0741-D-CAPGKN3T	Dust Cap GKN 3T	1
10	0741-NCAST78	Castle Nut 7/8" x 14	1
11	0741-NWH1-2-90	Wheel Nut 1/2" UNF, 90 Deg	6
12	0741-WS1-2-1-7-8	Wheel Stud 1/2" UNF x 1-7/8"	6

Used on Jockey wheels on 3009 and 4012 machines



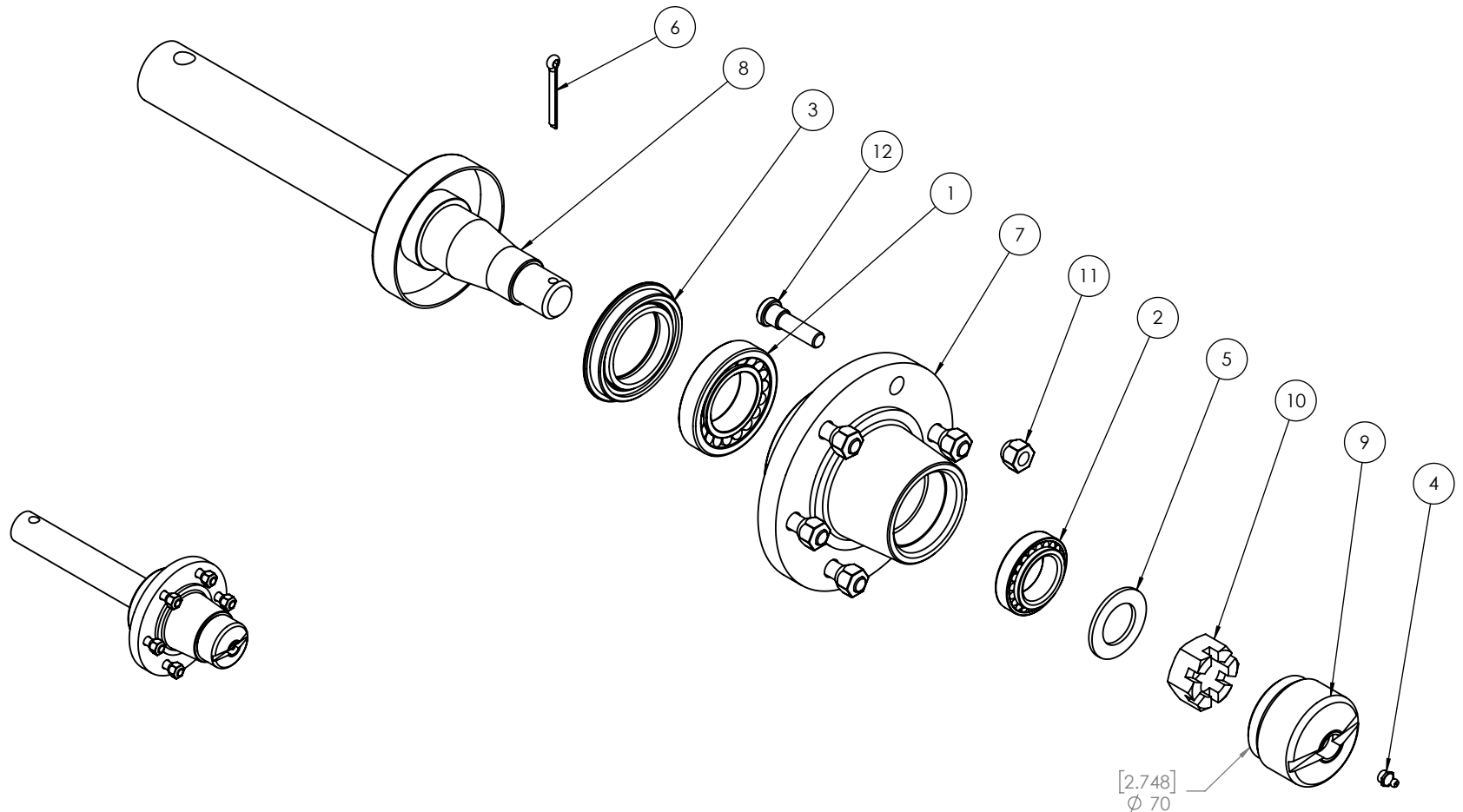
ITEM NO.	PART NUMBER	DESCRIPTION	QTY.
1	0111-JLM506849-10	Bearing JLM506849/10 Cone/Cup	1
2	0111-LM501349-10	Bearing LM501349/10 Cone/Cup	1
3	0121-TC27394	Seal Peer POS2753725VH (N906486)	1
4	0232-F1	Washer Flat 1"	1
5	0261-PINC557	Cotter Pin M5 x 57	1
6	0731-H60-8	N60-8 Hub W/Studs & G.F (N281081)	1
7	0732-NS2-3-4	6T 2-3/4" Spindle (N073296L18.74)	1
8	0741-D-CAPNF6T	Northfield Dust Cap for 0733-N281089L18.74 (N909912)	1
9	0741-NCAST112	Castle Nut 1 1/2"	1
10	0741-NW5-8-18	Wheel Nut 5/8-18 UNF 90 deg	8

Northfield Brand: Used on centre frames and wings across **ALL** machines as well as on 4614 Jockey wheels. Interchangeable with **GKN Brand**



ITEM NO.	PART NUMBER	Revision	DESCRIPTION	QTY.
1	0111-30210		Bearing 30210	1
2	0111-LM29749-10		Bearing Tapered Roller 38.1x65.088x18.034	1
3	0121-AP64607	A	AP7 Seal 90 x 60.3 x 10mm	1
4	0181-GN1-8	A	Grease Nipple 1/8" BSP	1
5	0232-F11-4		Washer Flat 1 1/4"	1
6	0261-PINC650		Cotter Pin M6 x 50mm	1
7	0731-H83660	B-0	3T 6 on 6" Hub Only	1
8	0732-K5083TS	B-0	2" Round 330 OHF Stub Only	1
9	0741-D-CAPLC4T	B-0	Dust Cap Ali 70 Round	1
10	0741-NCAS114	B-0	Castle Nut 1 1/4" x 12	1
11	0741-NWH1-2	B-0	Wheel Nut 1/2" UNF	6
12	0741-WS1-2	B-0	Wheel Stud 1/2" UNF x 2"	6

Used on Jockey wheels



ITEM NO.	PART NUMBER	Revision	DESCRIPTION	QTY.
1	0111-33011		Bearing 33011	2
2	0121-AP7M2 906510	A	AP7 Seal 90 x 65 x 10mm	1
3	0181-GN1-8	A	Grease Nipple 1/8" BSP	1
4	0232-F11-4		Washer Flat 1 1/4"	1
5	0261-PINC650		Cotter Pin M6 x 50mm	1
6	0732-275R6TKE	A	6T 2.75"R x 460mm Stub	1
7	0741-NCAST114	B-0	Castle Nut 1 1/4" x 12	1
8	0741-NW9-16	A	Wheel Nut 9/16" 90 Deg	8
9	0741-WS9-16	B-0	Wheel Stud 9/16" UNF	8
10	0731-H96880	B-0	6T 8 on 8" PCD (Hub only)	1
11	0741-DCAP6T	A-0	95mm Cast Screw In Dust Cap (Alum)	1
12	0211-SHLH616		M6 x 16 Low Head Socket Head	1

