

K4 FITTING GUIDE

1. K4 Disc Chains:



K4 Disc Assemblies link together with a hook and eye configuration. The assemblies are then secured with a M12 locking bolt and nut to prevent unlinking during folding or transport.

All components required to fit the K4 Disc Assemblies to your machine are provided in the kit.

For best results, when assembling chains, install K4 Disc Assemblies from the rear, moving forward towards the front of the machine. This method allows subsequent K4 Disc Assemblies to be added to the chain by placing the 'loop' over the 'hook' of the previous K4 assembly. Refer to the manuals provided.

Figure 1 - K4 Disc Assembly

Item	Description	Number	QTY
6	K4 Disc Assembly	0803-K4	1
7	M12 x 55 Bolt	0211-1255	1
8	Nyloc Nut M12	0211-NYL12	1

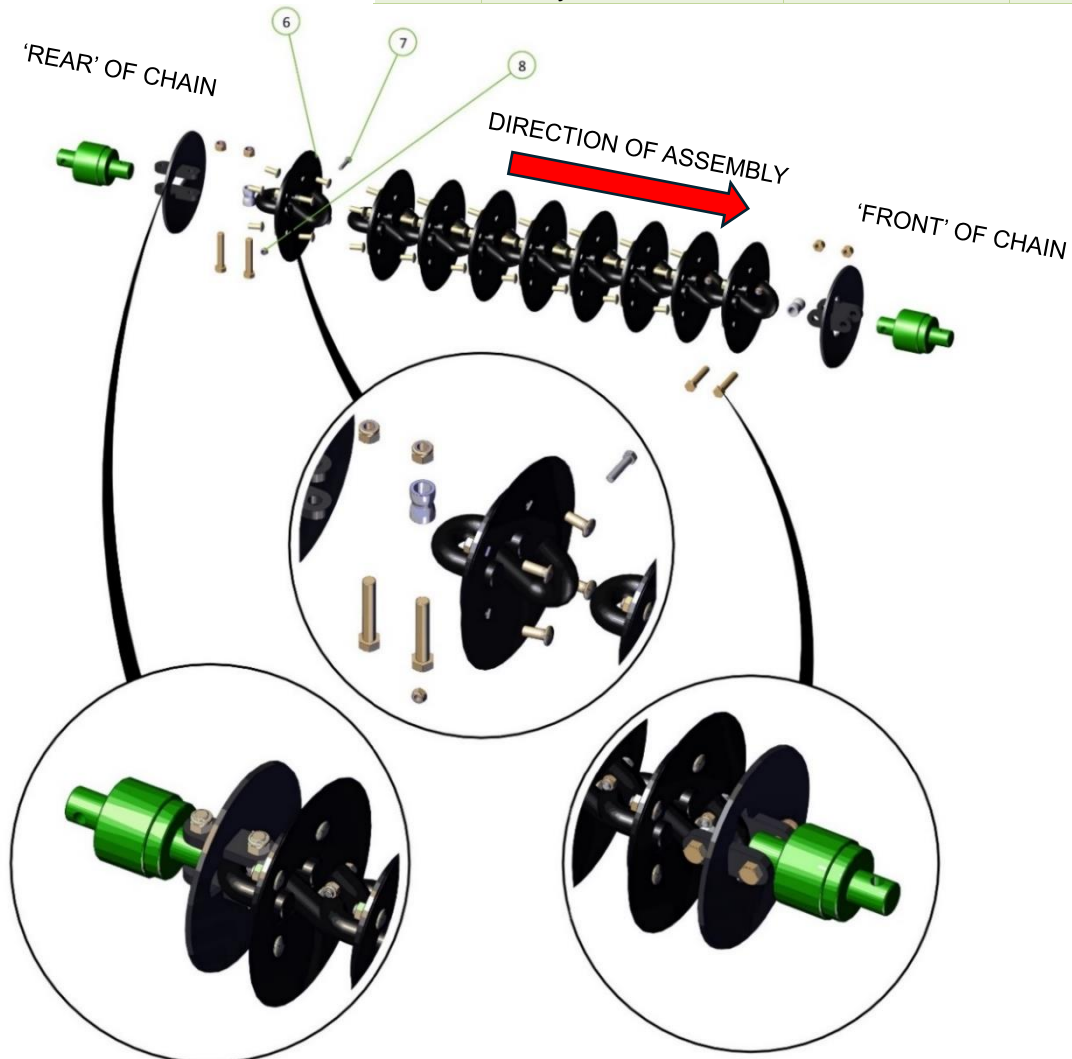


Figure 2 - K4 Disc Chain Typical Assembly

2. Bolt-on Weight Pair Option:

For more aggressive tillage, add weight pairs to K4 disc chains as needed. Weight pairs are added by a simple bolt-on procedure.

When adding weight pairs to K4 Disc Assemblies, the original bolts are replaced with longer bolts to account for the extra thickness of the weight pairs. The original flanged nuts are reused, however the original bolts can be set aside and only used again should the weight pairs be removed from the chain.

For ease of fitment, KELLY Tillage recommends that weight pairs are fitted to the K4 Disc Assemblies prior to installing on the machine. This will provide suitable access to all flanged nuts allowing correct bolt alignment and torque to be achieved.

Item	Part Number	Description	Qty
1	0803-K4-344	K4 Weight Pair - 3.44kg	1
2	0215-KCH58218	Kelly 5/8" x 2 1/8" Coach Head Bolt	4

Note: quantities above are for each K4 Disc Assembly

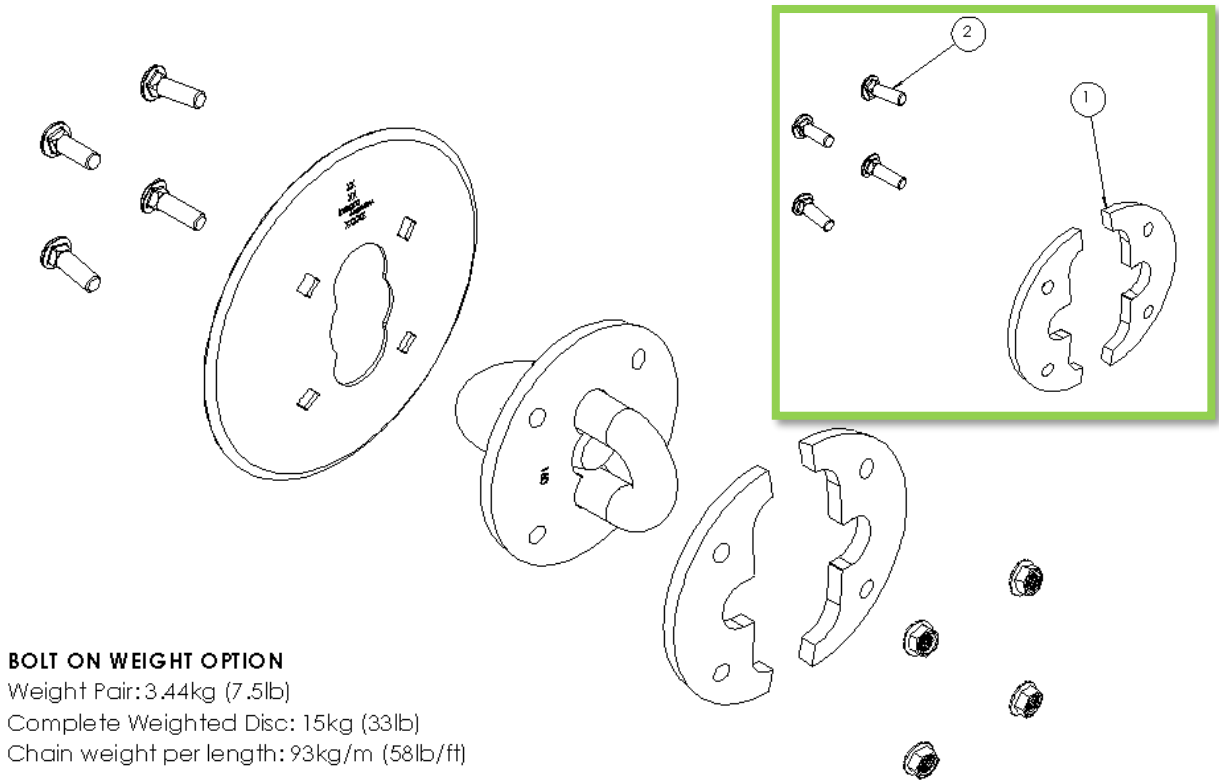


Figure 3 - K4 Bolt-on Weight Option

NOTE:

Only one pair of weights can be fitted per disc.
 The recommended torque for the flanged nuts is 150-170Nm (110-125ft/lbs).

3. Weighted Discs for Module Chains:

For more aggressive tillage through the centre section of the machine, discs used in the front and rear module chains are to be fitted with weight pairs. Chain sets, when provided complete, are supplied with weight pairs and the required bolts to be fitted to the module chains.

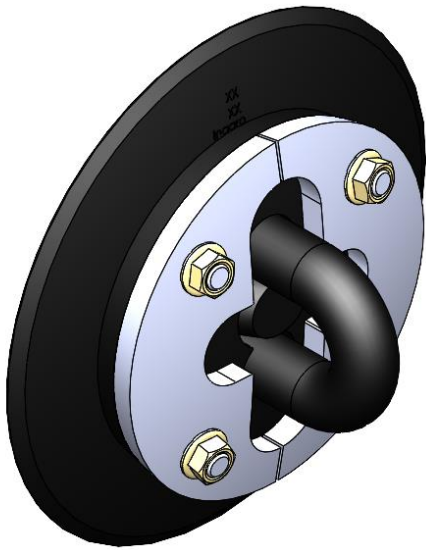


Figure 4 - K4 Weight pairs (shown in grey)

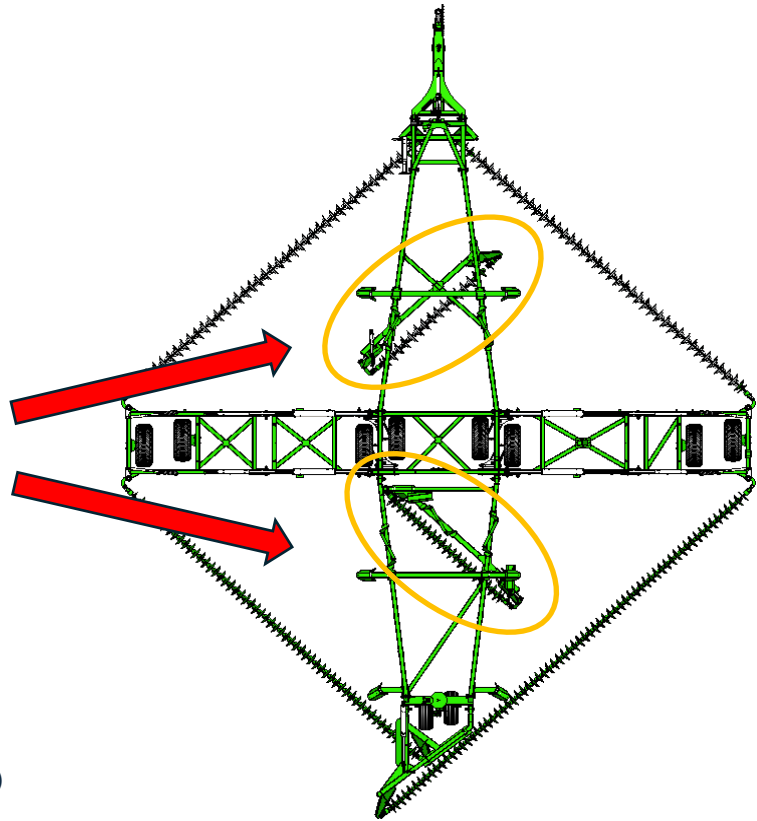


Figure 5 - Module Chain Locations (Model 4614 shown)

NOTE:

The disc chain tension setting is not affected by the fitment of weights. Refer to Operators Manual for correct disc chain tension setting.

4. Chain Tension Springs

The performance of K4 Disc chains is improved when the heavier “24mm spring” (part number **0801-K2455350**) is utilised in the disc chain tension mechanisms.

If your machine is not fitted with the heavier spring from factory, then they will be provided in your K4 chain set kit.

There is one spring per chain assembly and the quantity will vary depending on your machine. Typical locations are indicated below:

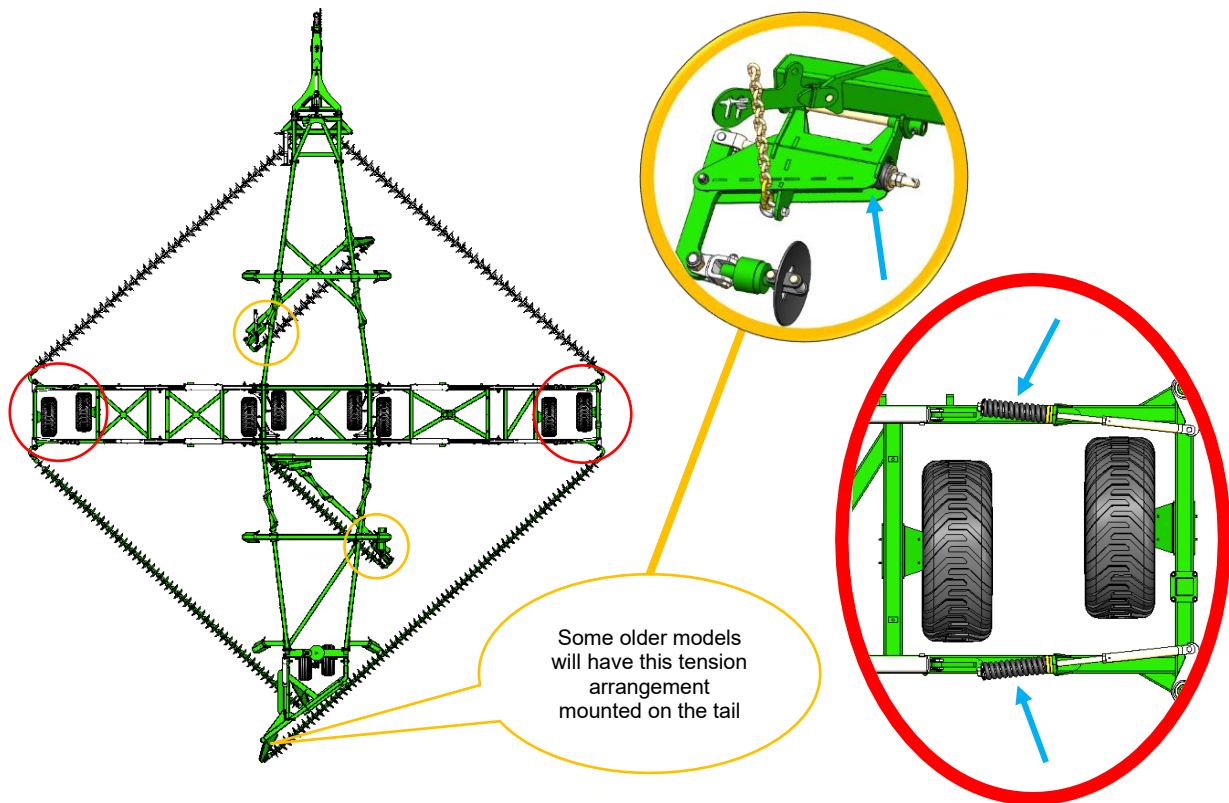


Figure 6 - Chain Tension Spring Locations (Model 4614 shown)

It is normal for all KELLY Tillage disc chains to ‘wear in’ during use and as a result, chain length will increase slightly. When this occurs, disc chain tension is affected. Disc chain tension should be monitored frequently and adjusted as required.

Not enough tension applied to disc chains can significantly affect the performance of the machines. Excessive disc chain tension can result in frame damage. Read the manuals carefully and adjust the disc chain tension setting as required.

KELLY Tillage recommends the fitment of chain tension indicators to ensure disc chain tension is maintained in a proper manner. Please refer to *Technical Bulletin 114 – Spring Tension Indicator Installation* for further information.

If you have any questions about the correct fitting of disc chains or spare parts enquiries, please do not hesitate to contact the KELLY Tillage team (refer contact details at the end of this document), refer to the Farmer Resources section of our website or speak to your local dealer.

5. Replacing K4 Discs:

The disc used on the K4 discs assemblies can be replaced if they have become worn or damaged.

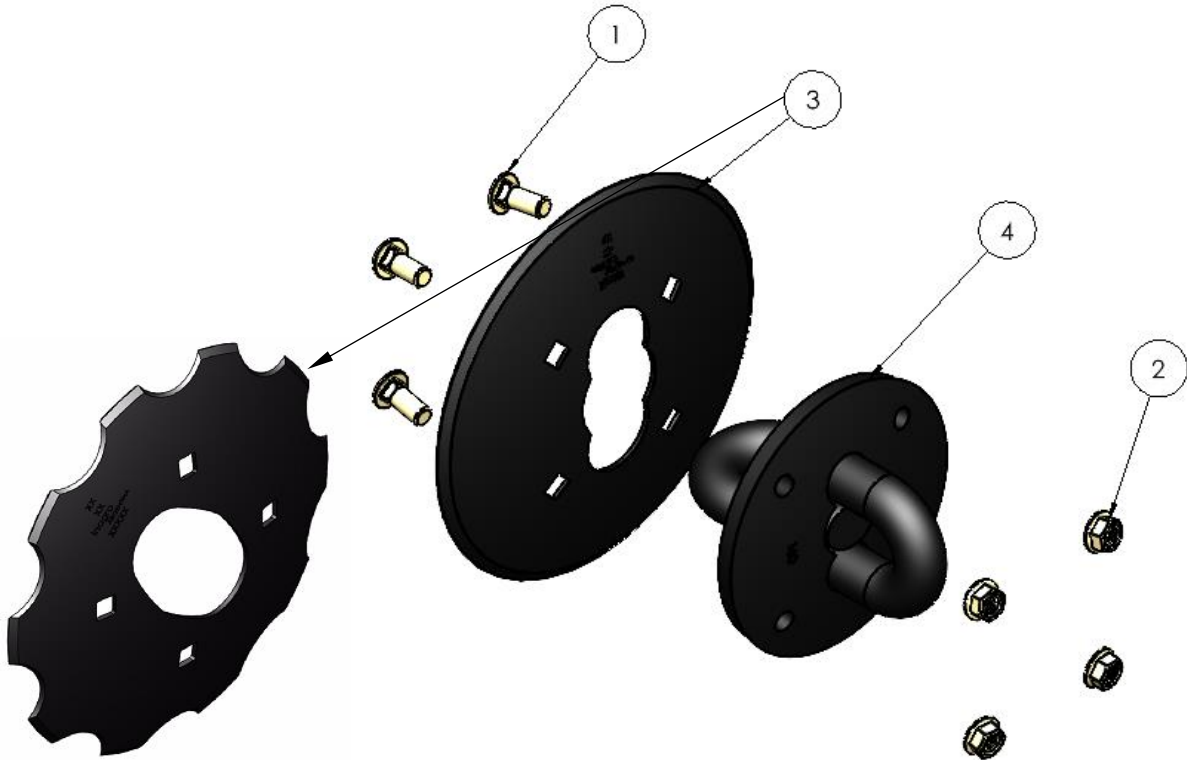


Figure 7 – K4 Disc Assembly Components

Item	Part Number	Description	Qty
1	0215-KCH58112	Kelly 5/8" x 1 1/2" Coach Head Bolt	4
2	022-WZ5-8	5/8" Serrated Flange Lock Nut ZP G5	4
3	0803-K4-01 or 0803-K4N-01	K4 Disc - Smooth D330xR590x4 K4 Notch Disc Blade 13"(330mm x 4mm)	1
4	0803-K4-160	K4 160mm Link Fabrication	1

Note:

Chains must be disconnected from the machine prior to attempting disc replacement. Refer to your Operators Manual for correct chain removal and replacement procedures.

Once the chains have been disconnected from the machine and an individual K4 Disc Assembly taken out of the chain, the flanged nuts (item 2 above) can be removed, and the disc changed.

When reassembling the discs, the recommended torque for the flanged nuts is 150-170Nm (110-125ft/lbs).

6. Contact Information:

To order replacement parts or for any questions regarding K4 disc chains, please contact your local dealer or the team at KELLY Tillage.

Australia:

KELLY Tillage Pty. Ltd

Phone: 08 8667 2253

Email: parts.aus@kellytillage.com

North America:

Hood & Company, Inc

Phone: 417-865-2100

Email: parts.usa@hoodco.com

Europe:

KELLY Tillage Pty. Ltd

Phone: +61 8 8667 2253

Email: parts.eur@kellytillage.com