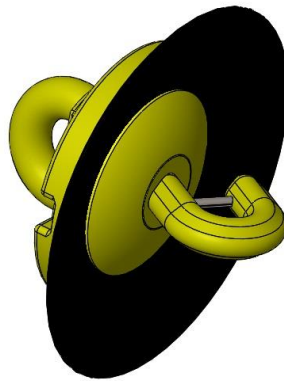




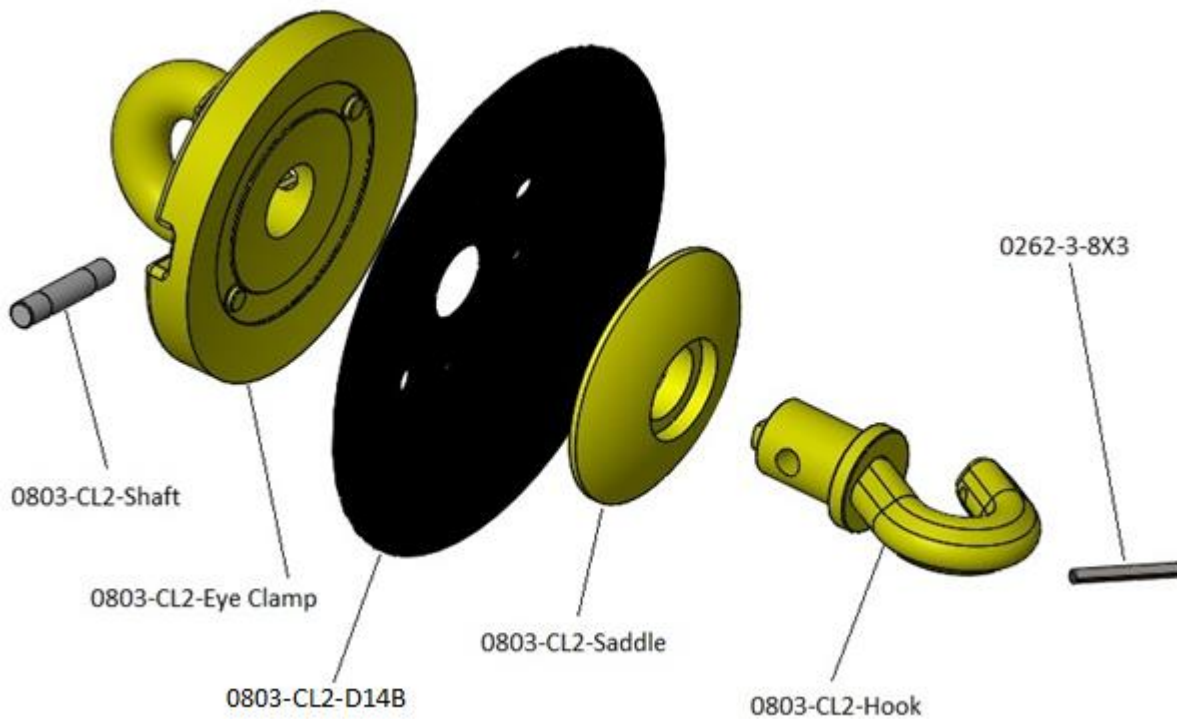
## Assembly Update AU041

### CL2 Chain Configuration – All machines

Page 1 of 8



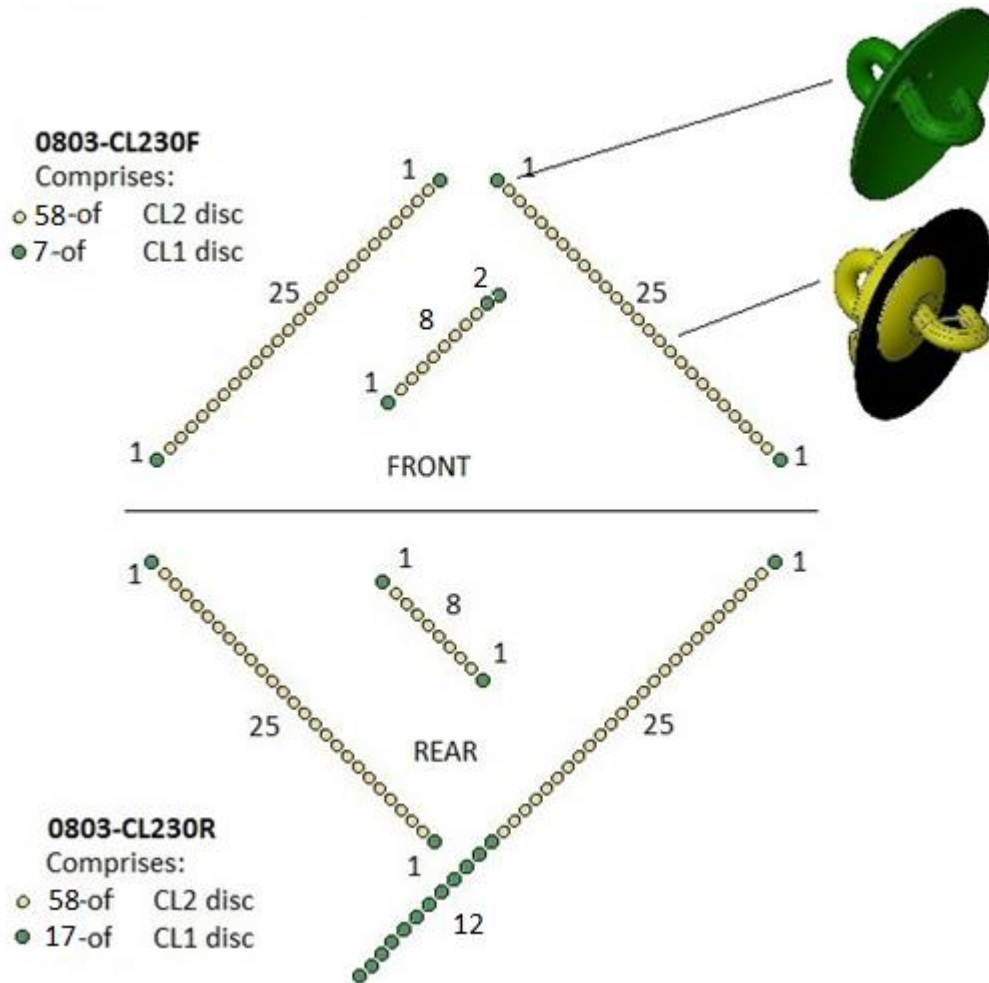
0803-CL2-Link Assembly



## CL2 Chain Configuration – All machines

Page 2 of 8

### 30' Machine



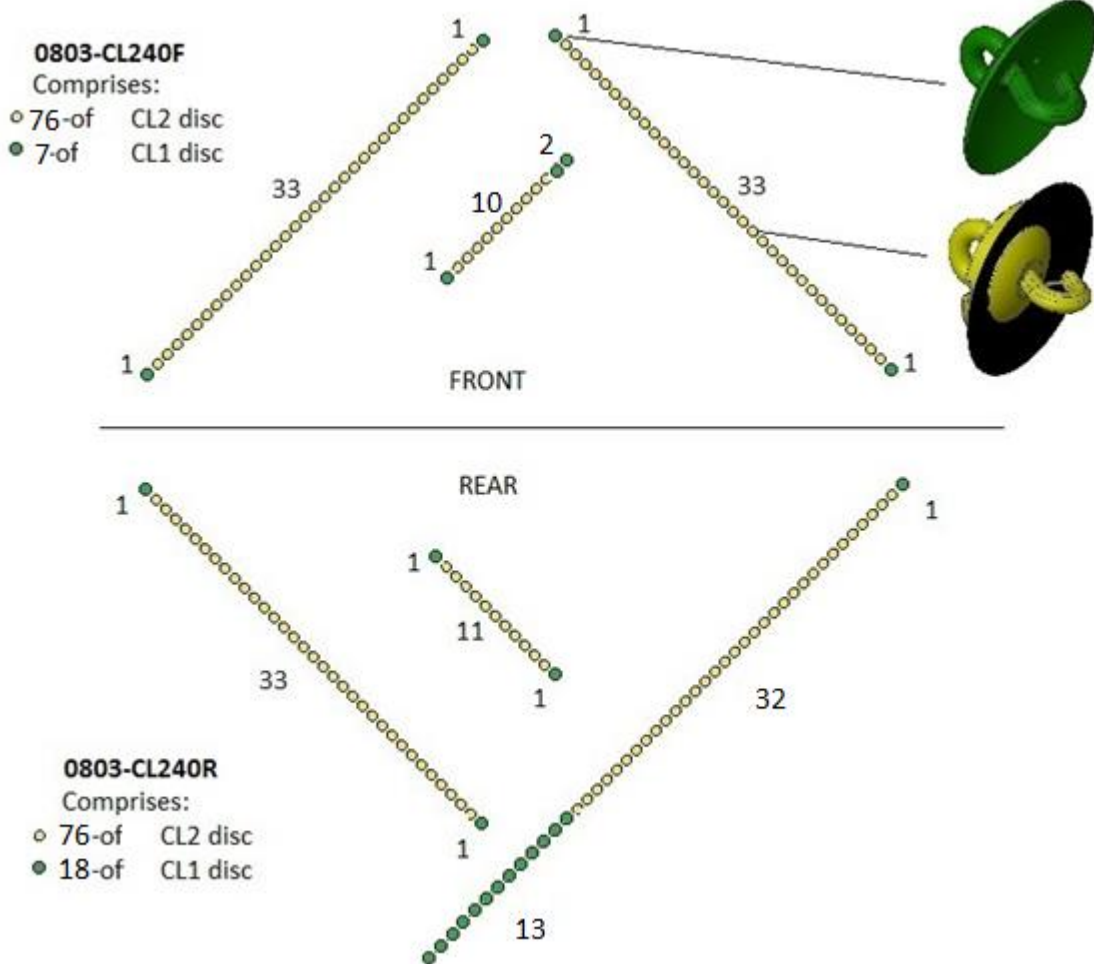
### Please Note

Machines built from serial number 1170126 on will have 3 extra CL1 discs on the rear right chain.

## CL2 Chain Configuration – All machines

Page 3 of 8

### 40' Machine



**Please Note**

**Machines built from serial number 1170126 on will have 3 extra CL1 discs on the rear right chain.**

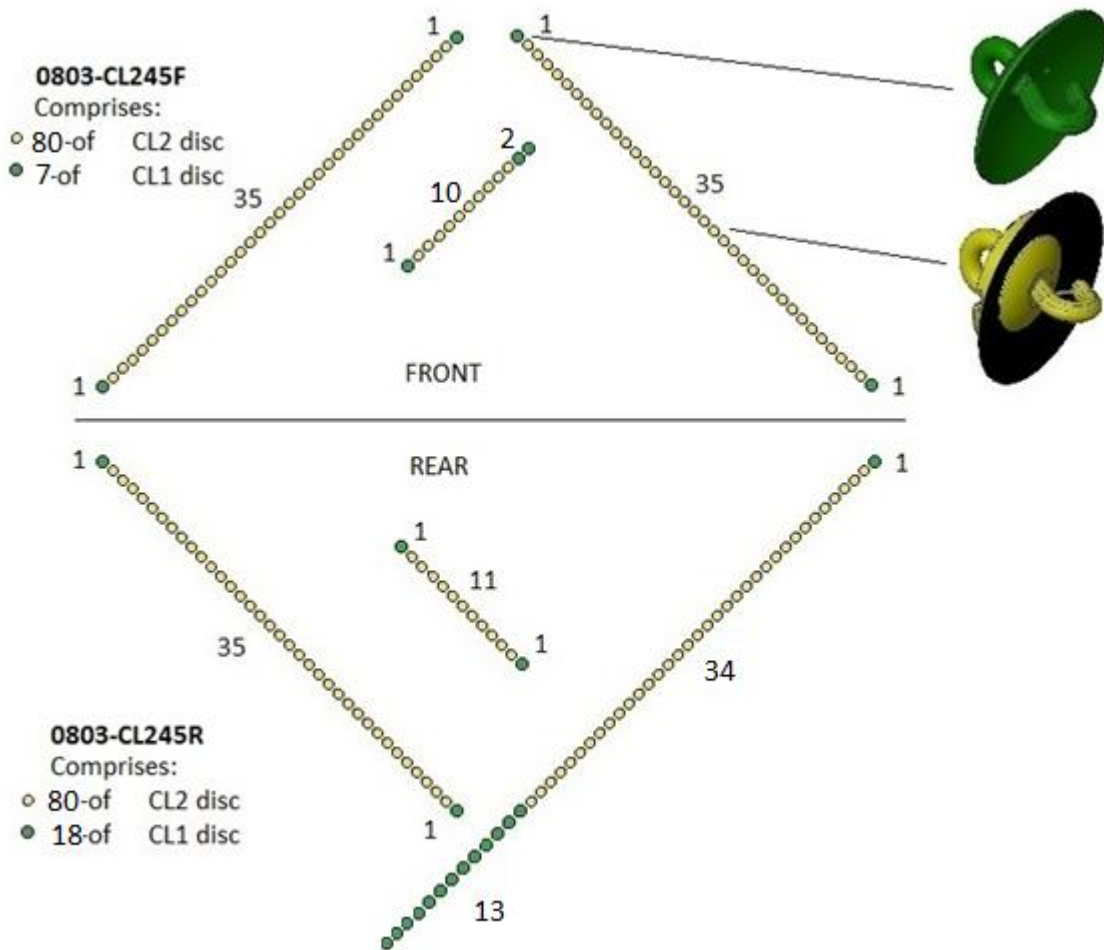


## Assembly Update AU041

### CL2 Chain Configuration – All machines

Page 4 of 8

#### 45' Machine



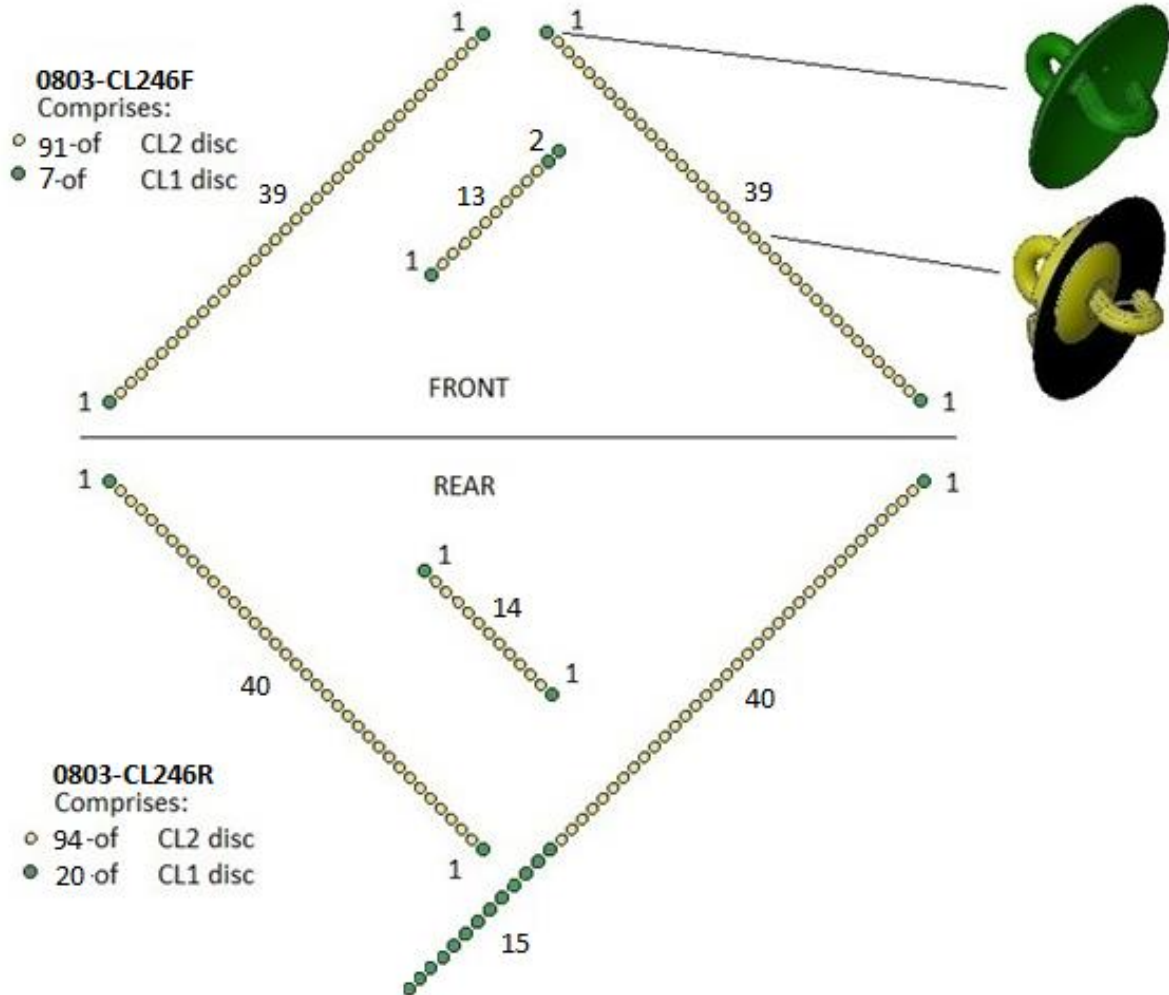
#### Please Note

Machines built from serial number 1170126 on will have 3 extra CL1 discs on the rear right chain.

## CL2 Chain Configuration – All machines

Page 5 of 8

### Model 46



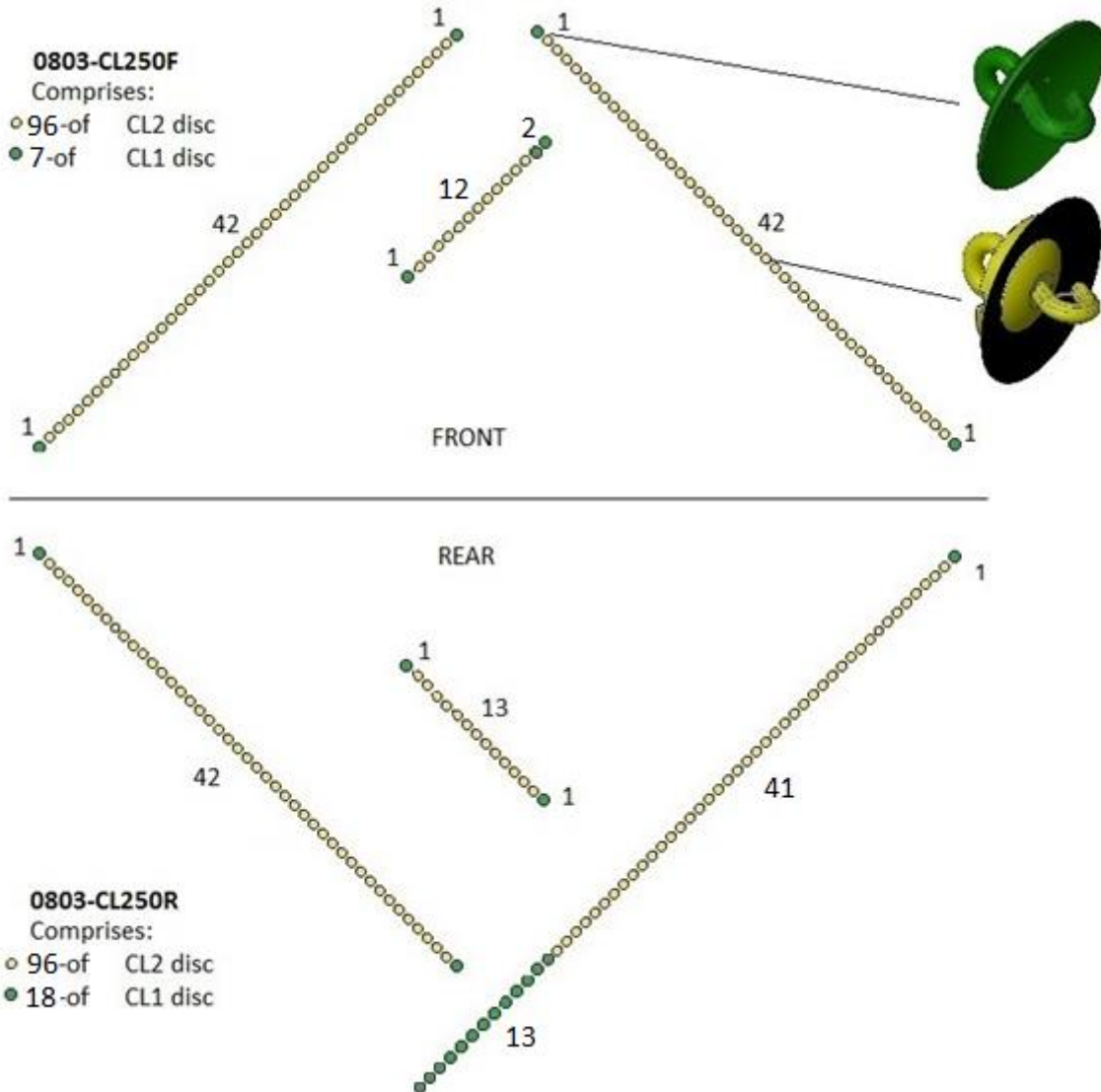
### Please Note

Machines built from serial number 1170126 on will have 3 extra CL1 discs on the rear right chain.

## CL2 Chain Configuration – All machines

Page 6 of 8

### 50' Machine



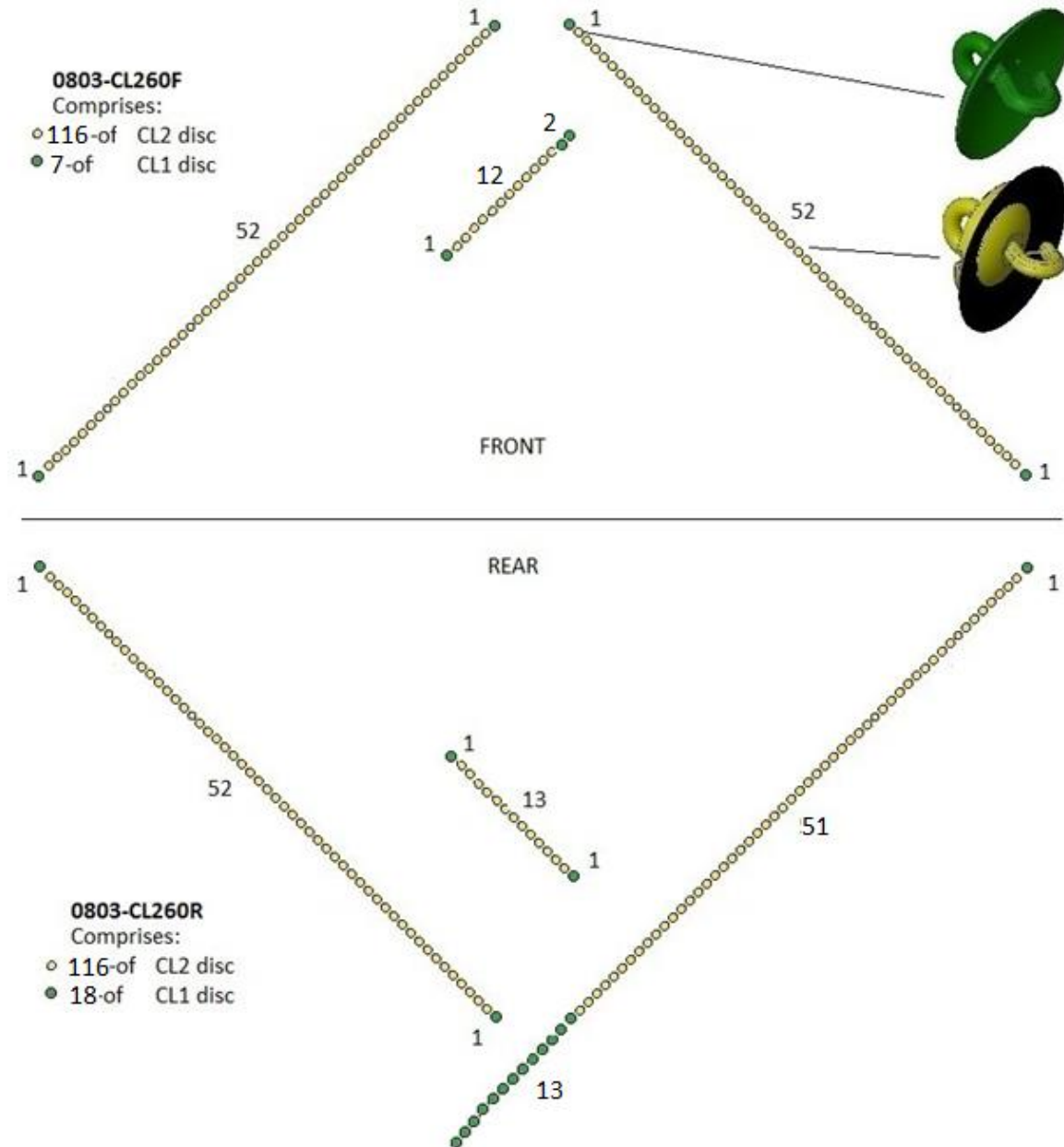
**Please Note**

**Machines built from serial number 1170126 on will have 3 extra CL1 discs on the rear right chain.**

## CL2 Chain Configuration – All machines

Page 7 of 8

### 60' Machine



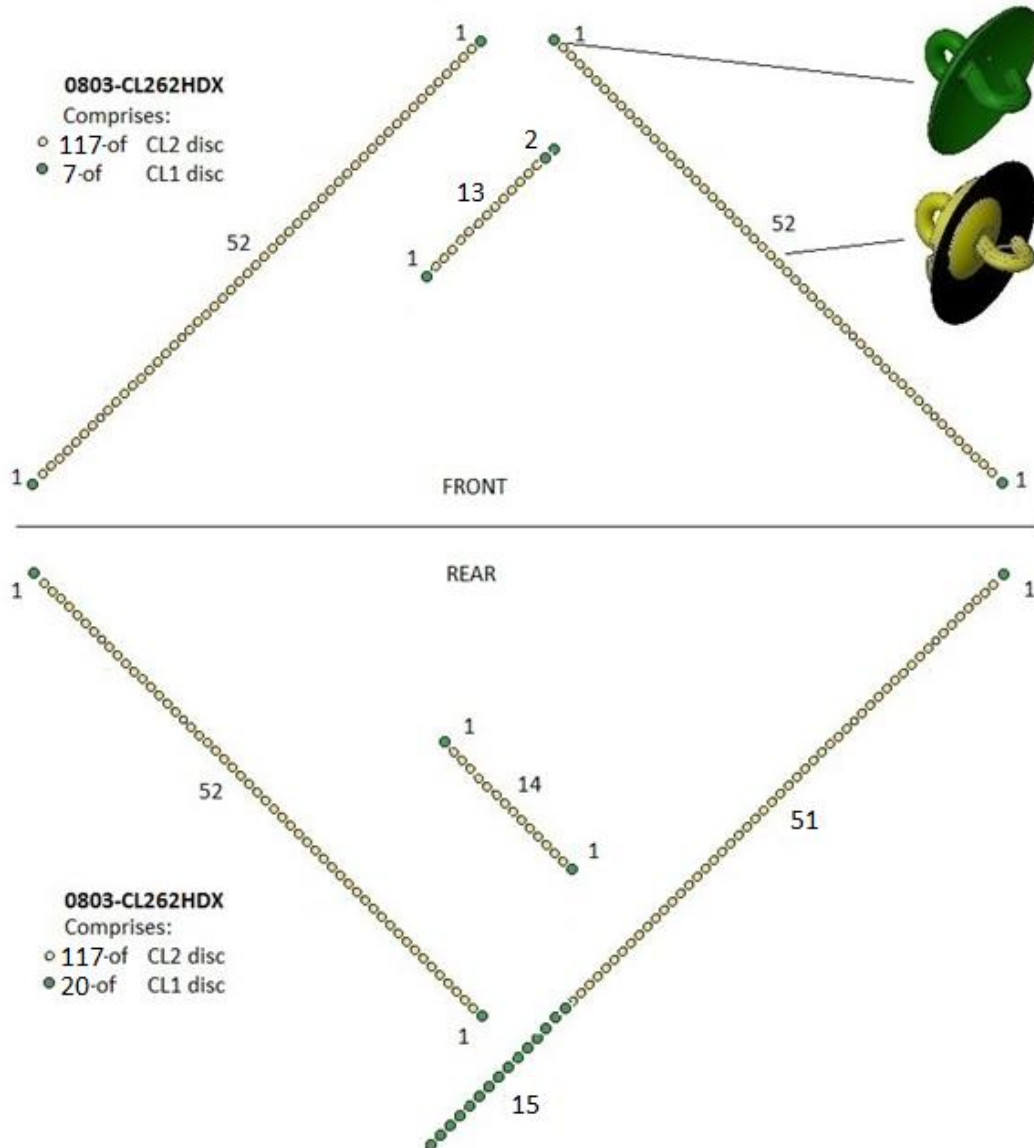
### Please Note

**Machines built from serial number 1170126 on will have 3 extra CL1 discs on the rear right chain.**

## CL2 Chain Configuration – All machines

Page 8 of 8

### 62'HDX Machine



### Please Note

Machines built from serial number 1170126 on will have 3 extra CL1 discs on the rear right chain.