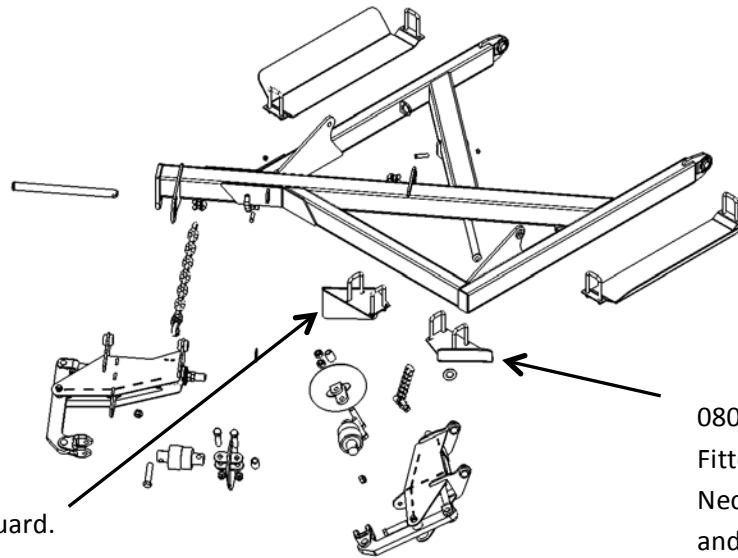


Chain Tensioners on Rear Tail



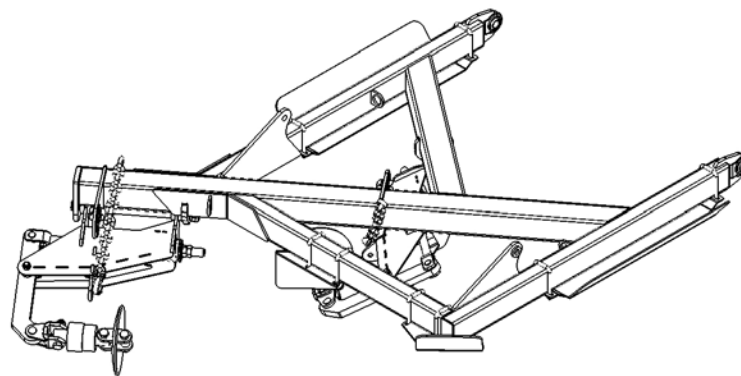
0800-220 Tail Chain Stop Guard.

This is fitted in location shown for 0800-498 on older machines. It may be beneficial to relocate it as shown to help protect the Left Rear Tension Assembly from catching on the discs during transport.

0800-498 Angled Chain Guard. Fitted to newer models. Necessary for Spiked Disc Chain and available as spare part if desired. Supersedes 0800-220 as spare part.

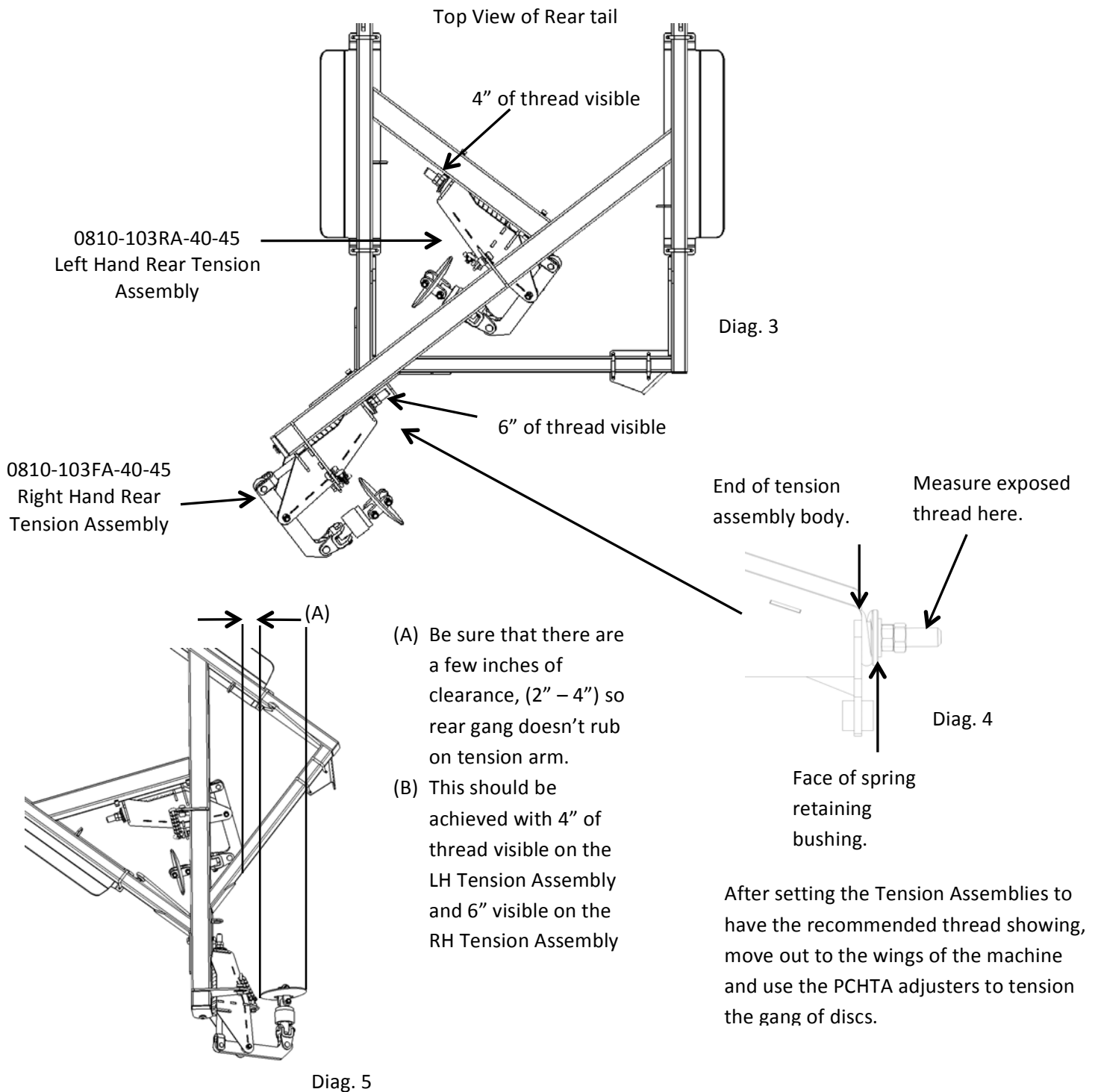
Diag. 1

Set height adjusting chain in the 7th link.

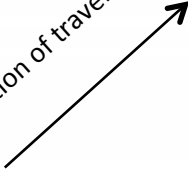


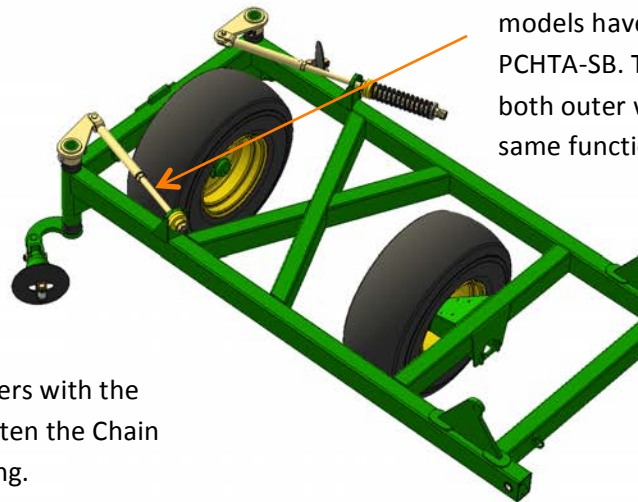
Diag. 2

Chain Tensioners on Rear Tail



Chain Tensioners on Rear Tail

Direction of travel




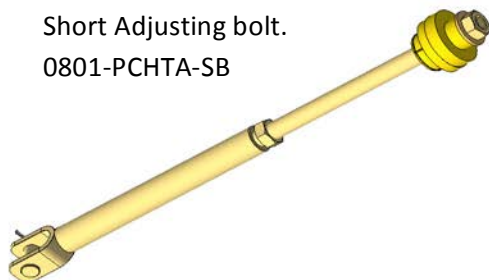
Please note – Earlier models have Part no 0801-PCHTA-FB (see below) as a stop tube on a long adjusting bolt, more recent models have a short adjusting bolt, 0801-PCHTA-SB. These appear on the rear of both outer wings only. Both serve the same function.

After setting the tail tensioners with the correct thread exposed, tighten the Chain Tension Adjusters on the wing.

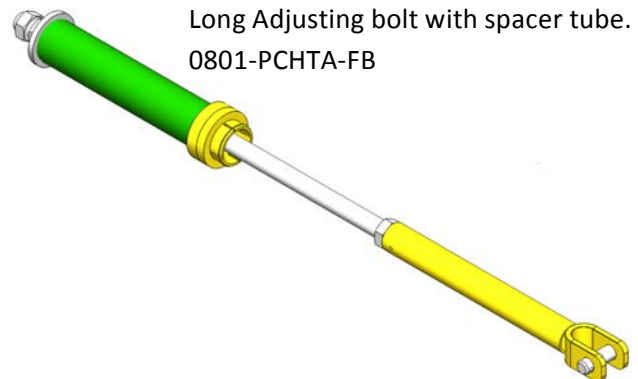
Diag. 6

Adjust until the chain “springs” back to position when you roll the gang of discs back and forth.

Check the Rear Tension Assemblies to see that the face of the spring retaining bushing is flush with the end of the tension assembly body. (Diag. 4)



Short Adjusting bolt.
0801-PCHTA-SB



Long Adjusting bolt with spacer tube.
0801-PCHTA-FB