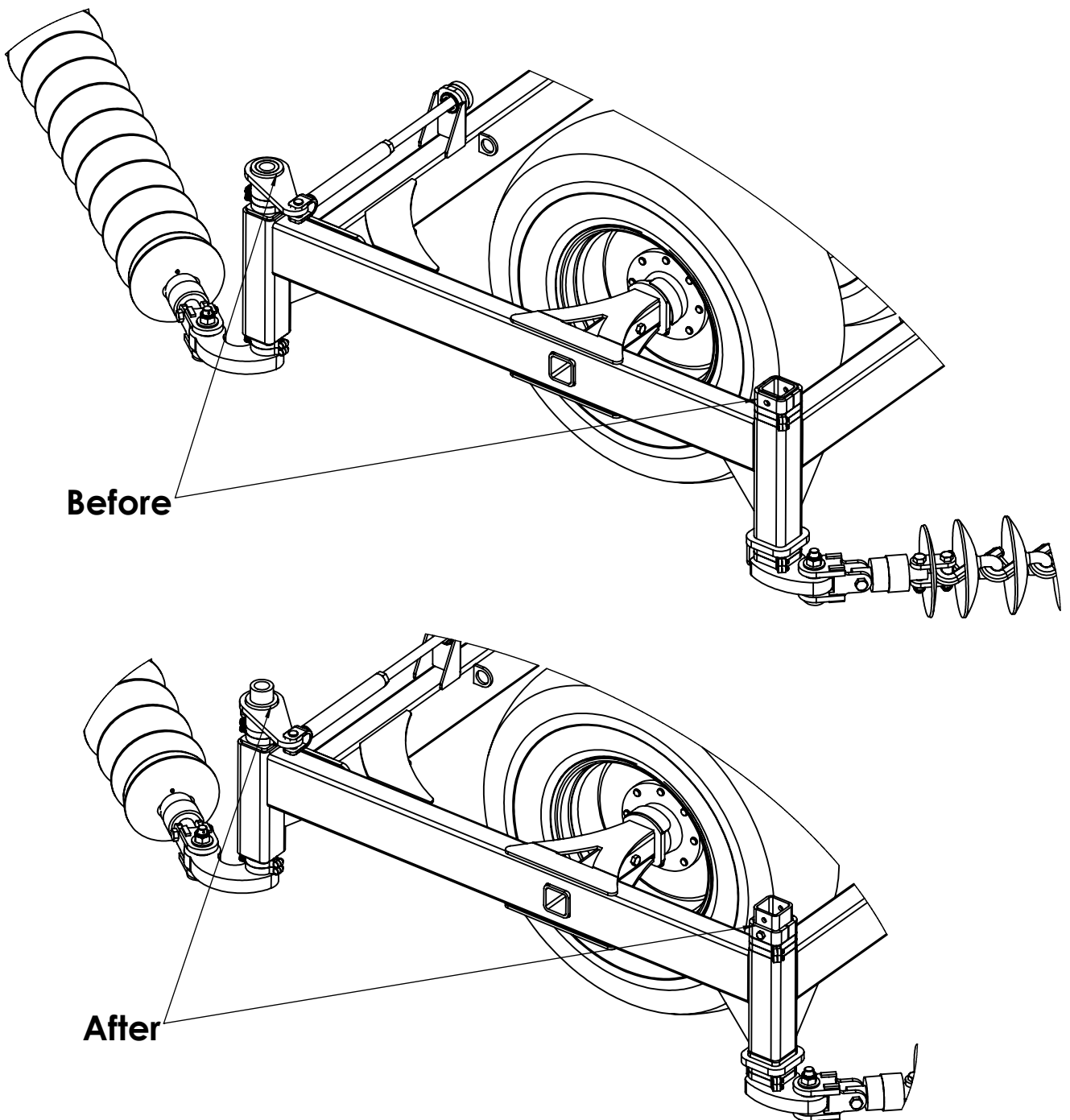
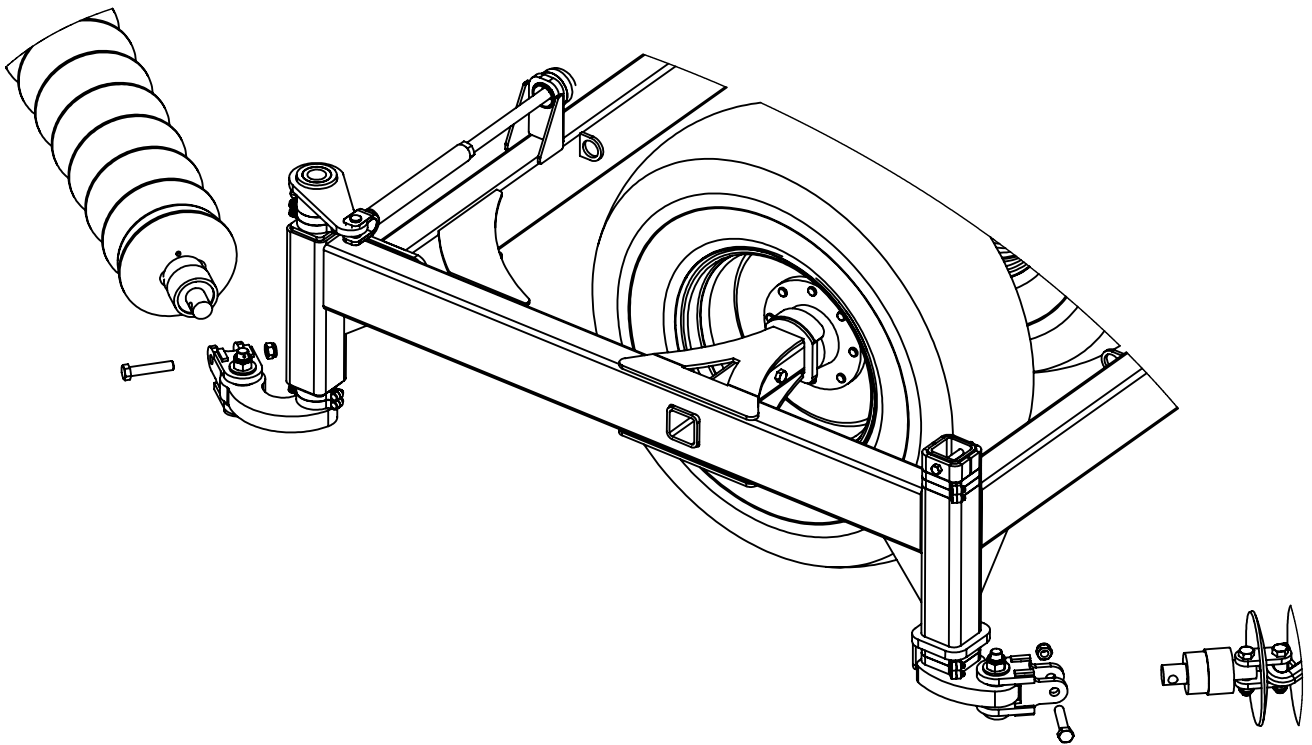


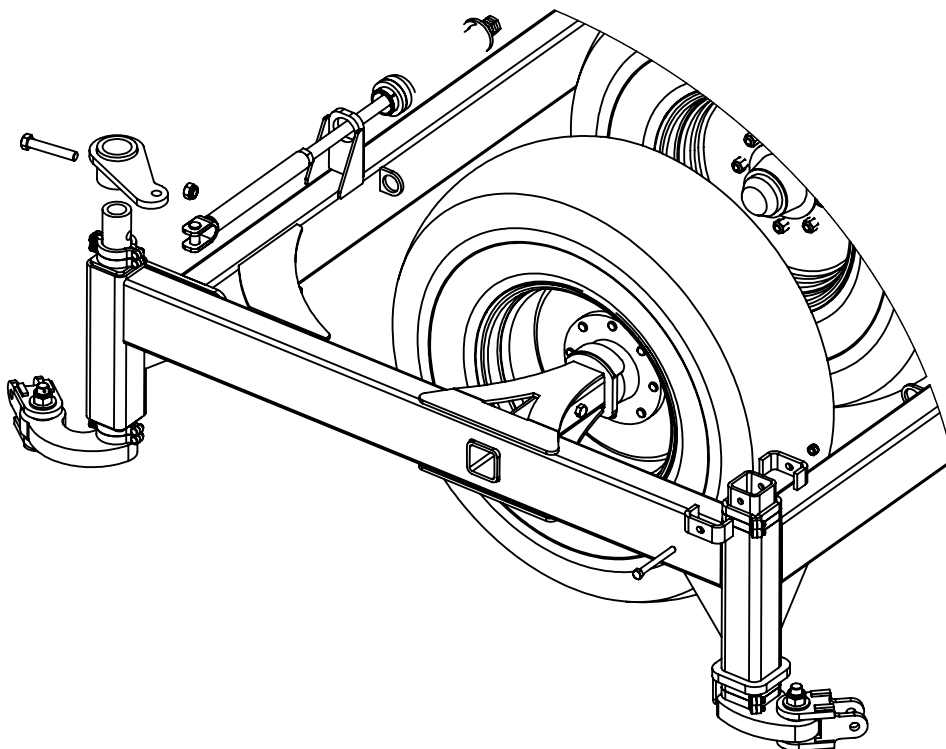
This technical bulletin outlines the steps required to modify the 62XHD machine to give 50mm (2") more adjustment in chain height at the wing tips



**STEP 1:** Un-tension the chains and remove them at the wing tips by removing the swivel mount bolts as shown below

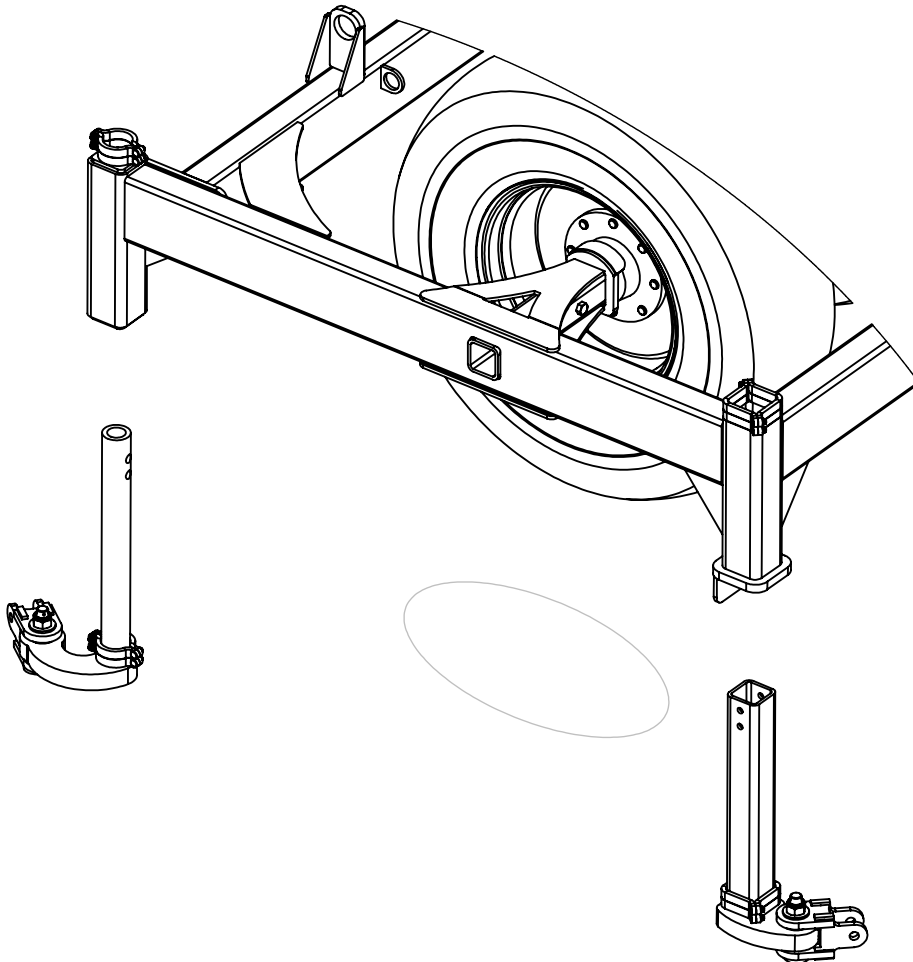


**STEP 2:** Remove the front chain tension assembly and the rear drop leg retaining plates as shown below

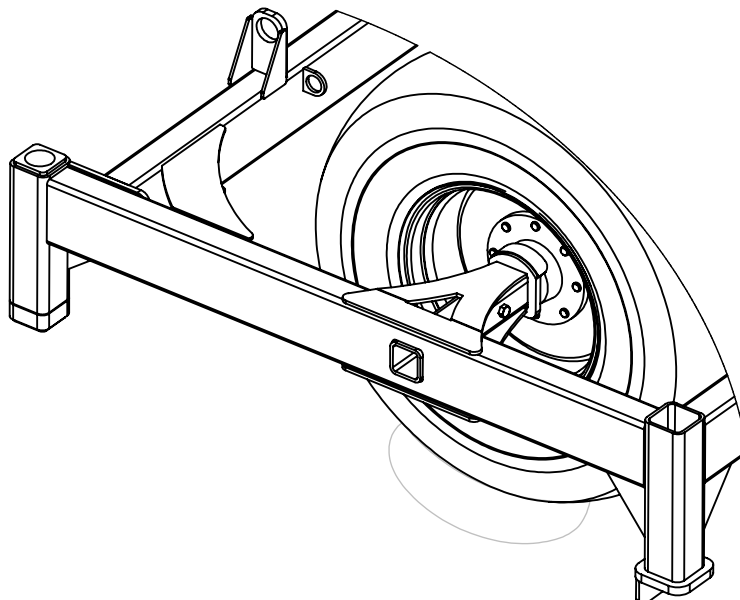


62HDX Drop Leg Modification

**STEP 3:** Raise the wing frame using a suitable lifting device or by retracting the machine hydraulics to remove the droplegs as shown below

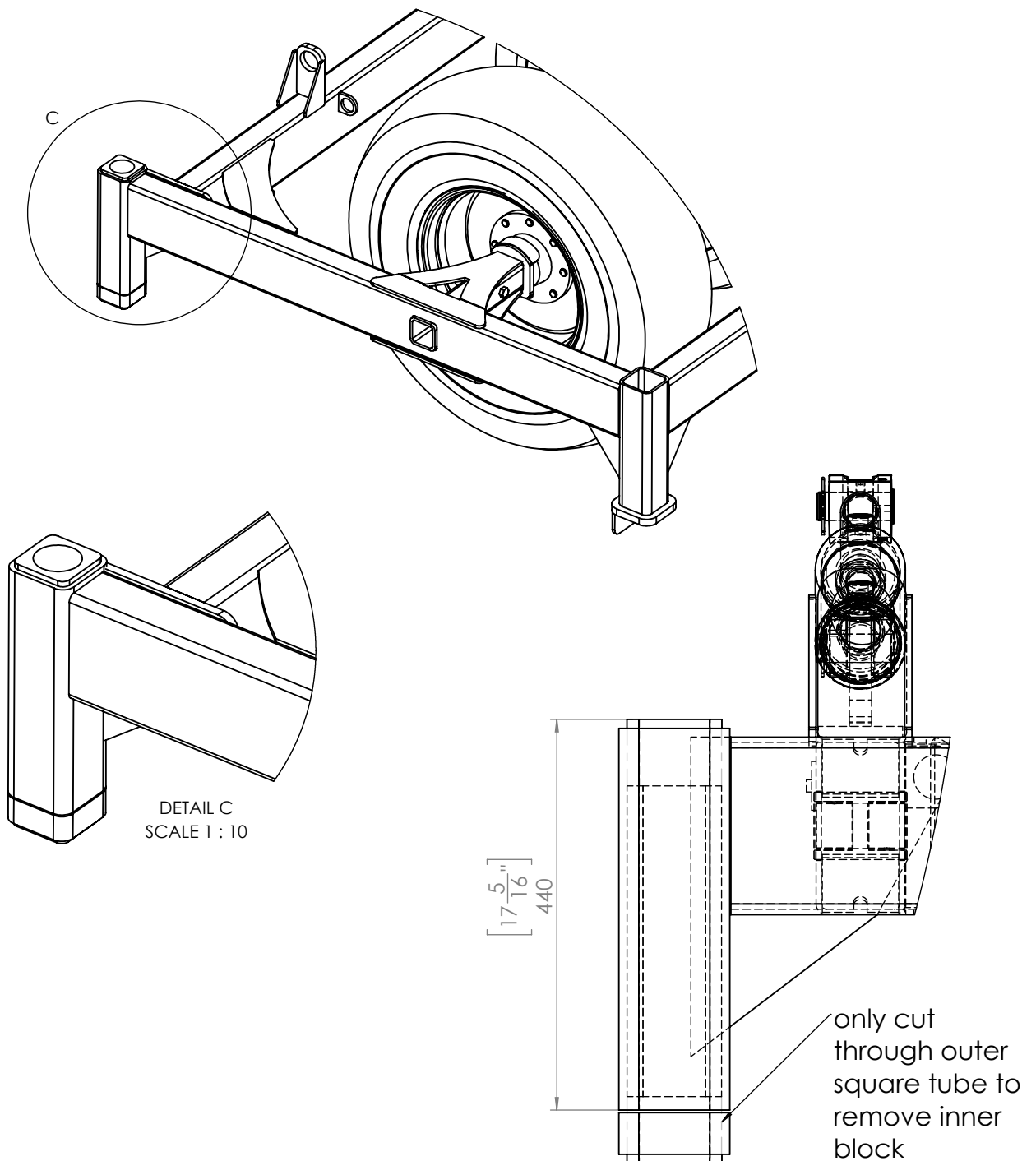


**STEP 4:** With the droplegs removed lower the wing frame back to ground level as shown below

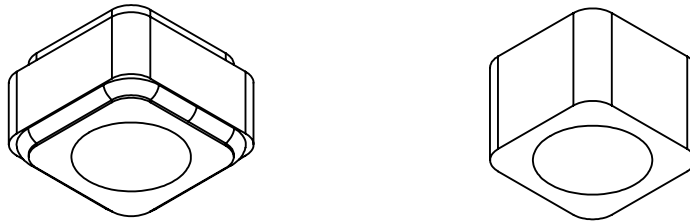


62HDX Drop Leg Modification

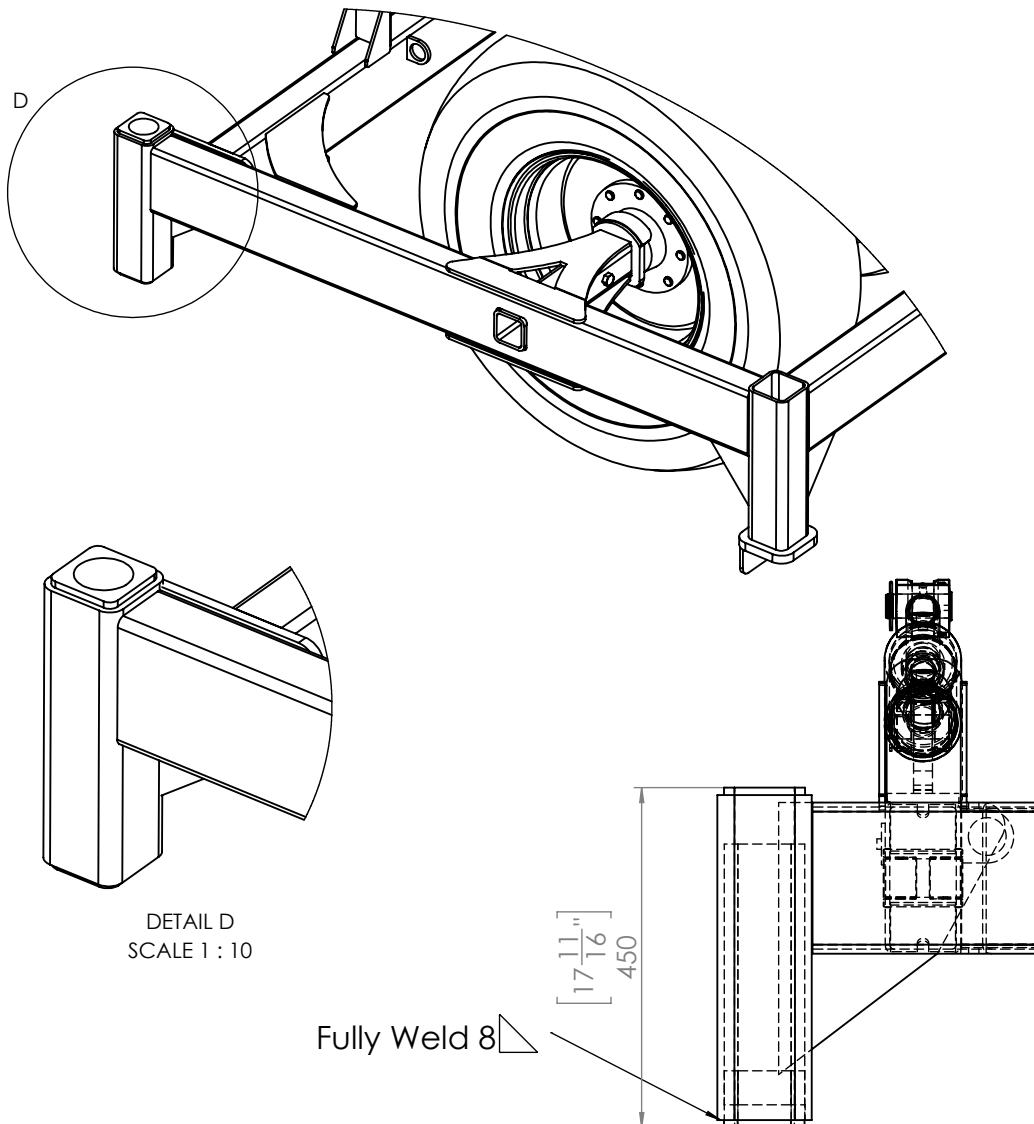
**STEP 5:** Using an angle grinder with a cutting disc cut around the front dropleg tube as shown below. Note the internal block extends up past the cutting line. Only need to cut through the outer square tube and the inner block will drop out. Keep the inner block as this will be re used.



**STEP 6:** Using an angle grinder with a grinding disc grind away the weld attaching the outer tube to the inner block as shown below.

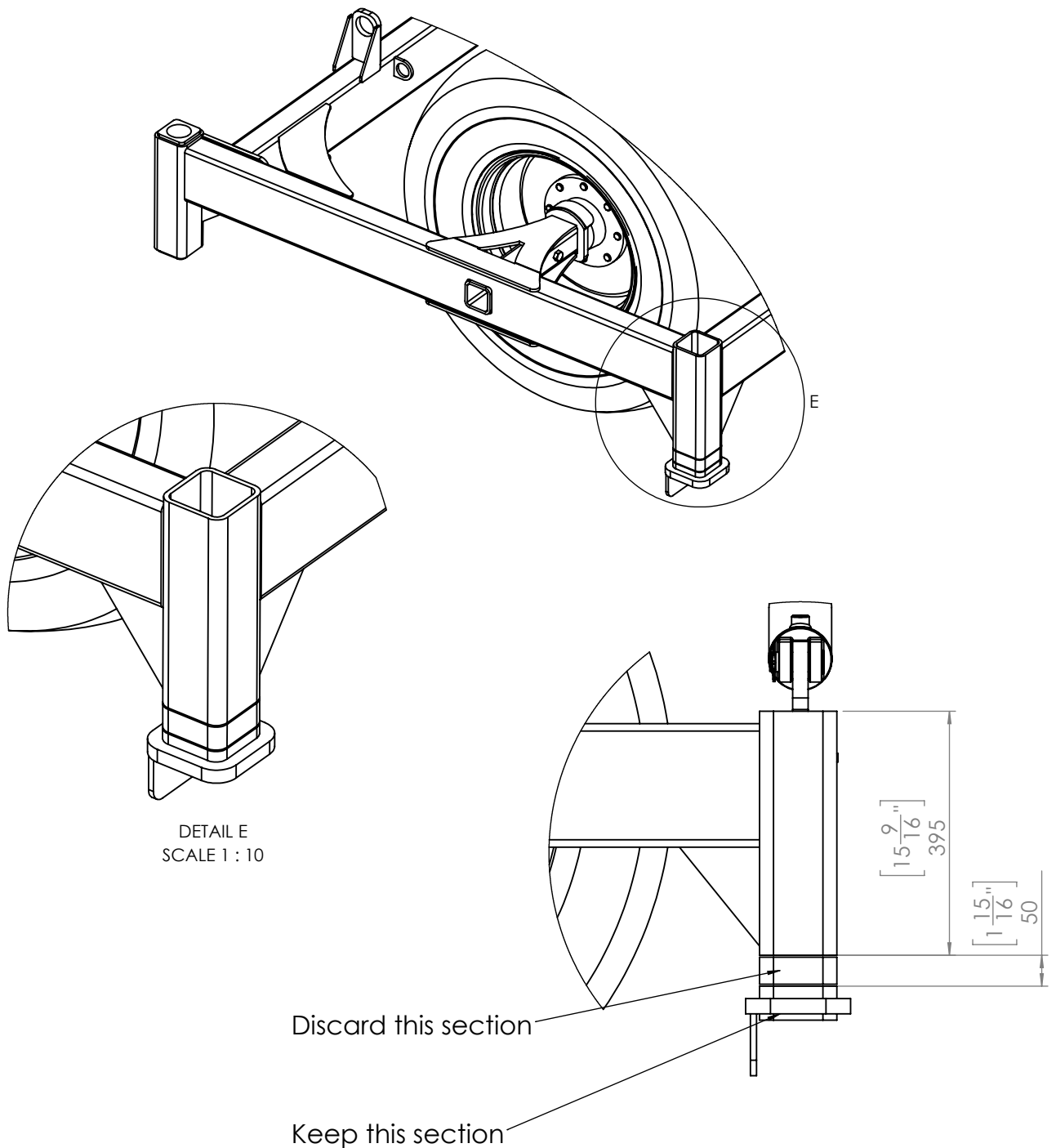


**STEP 7:** insert the reclaimed block into the base of the dropleg and re weld block to the square tube as shown below. Clean up welds and re paint.



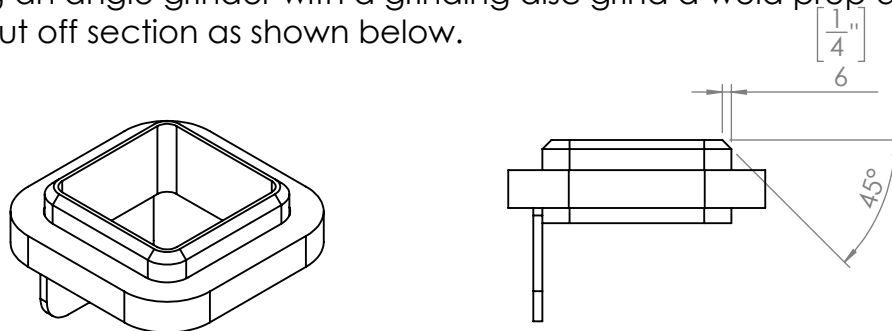
62HDX Drop Leg Modification

**STEP 8:** Using an angle grinder with a cutting disc cut around the rear dropleg tube as shown below. Remove and discard the 50mm (2") cut out section, Keep the base section to weld back on in the next step.

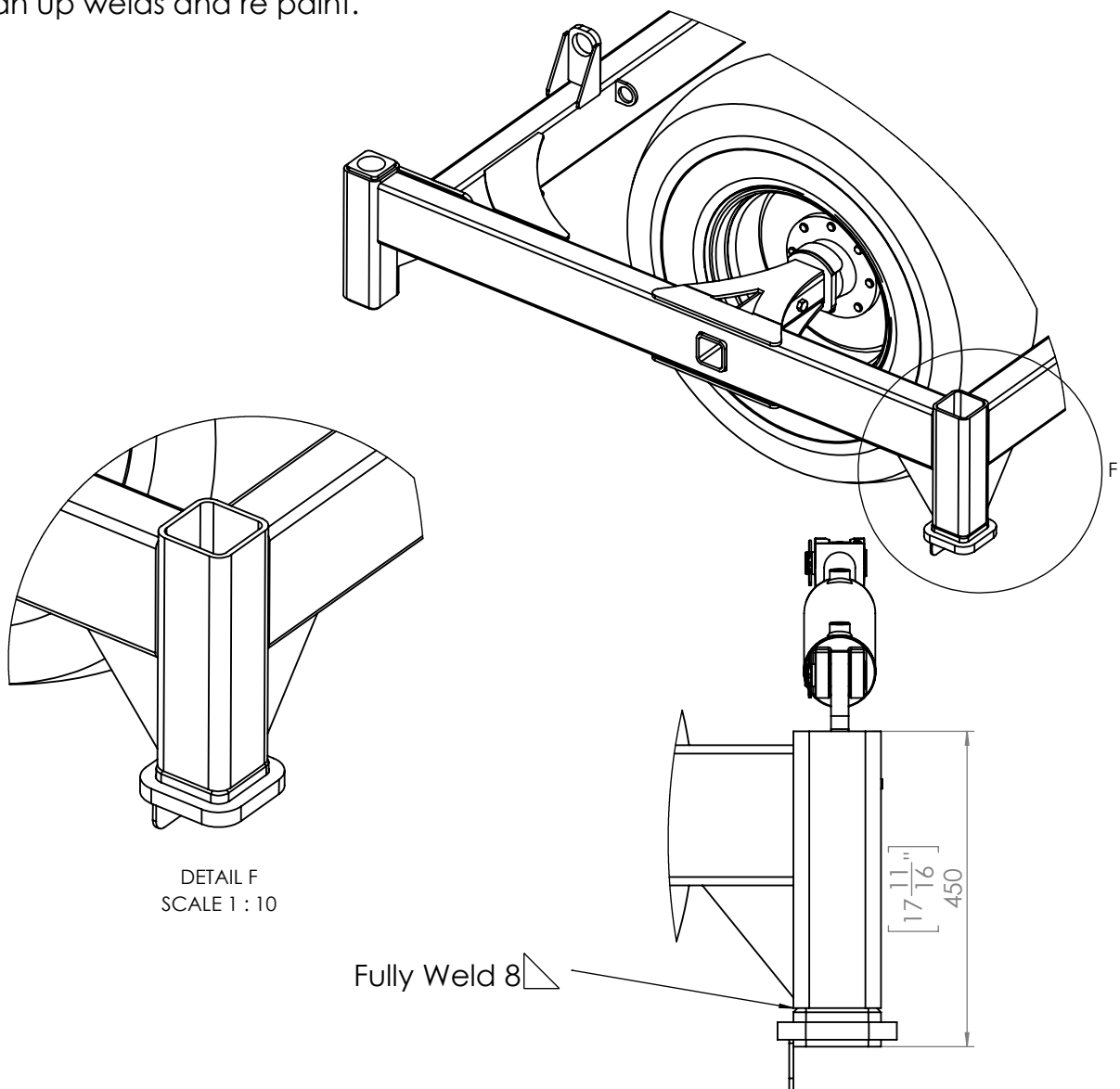


62HDX Drop Leg Modification

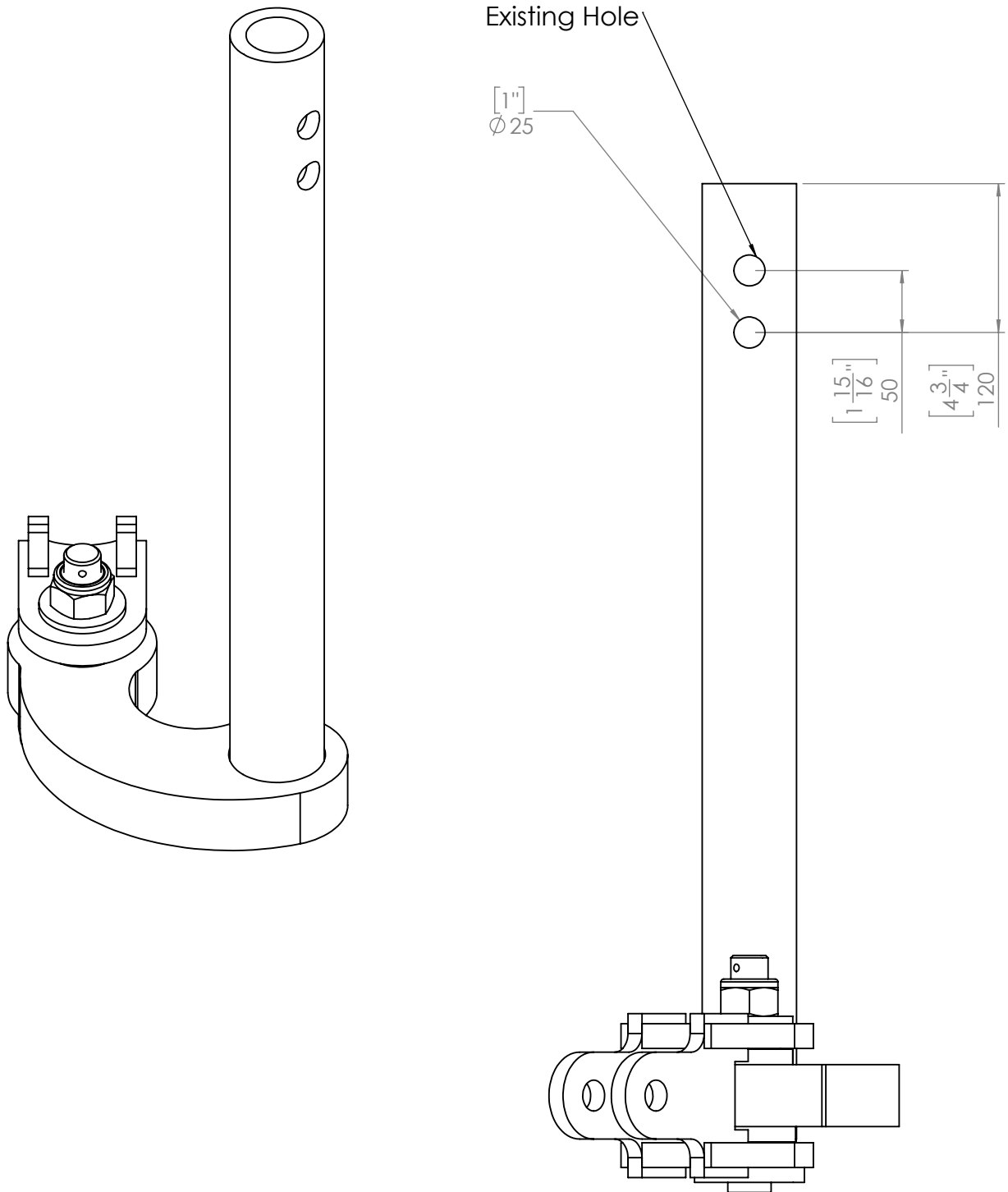
**STEP 9:** Using an angle grinder with a grinding disc grind a weld prep around the top of the cut off section as shown below.



**STEP 10:** Set up and re weld the cut off section to the base of the rear drop leg tube as shown below. Clean up welds and re paint.

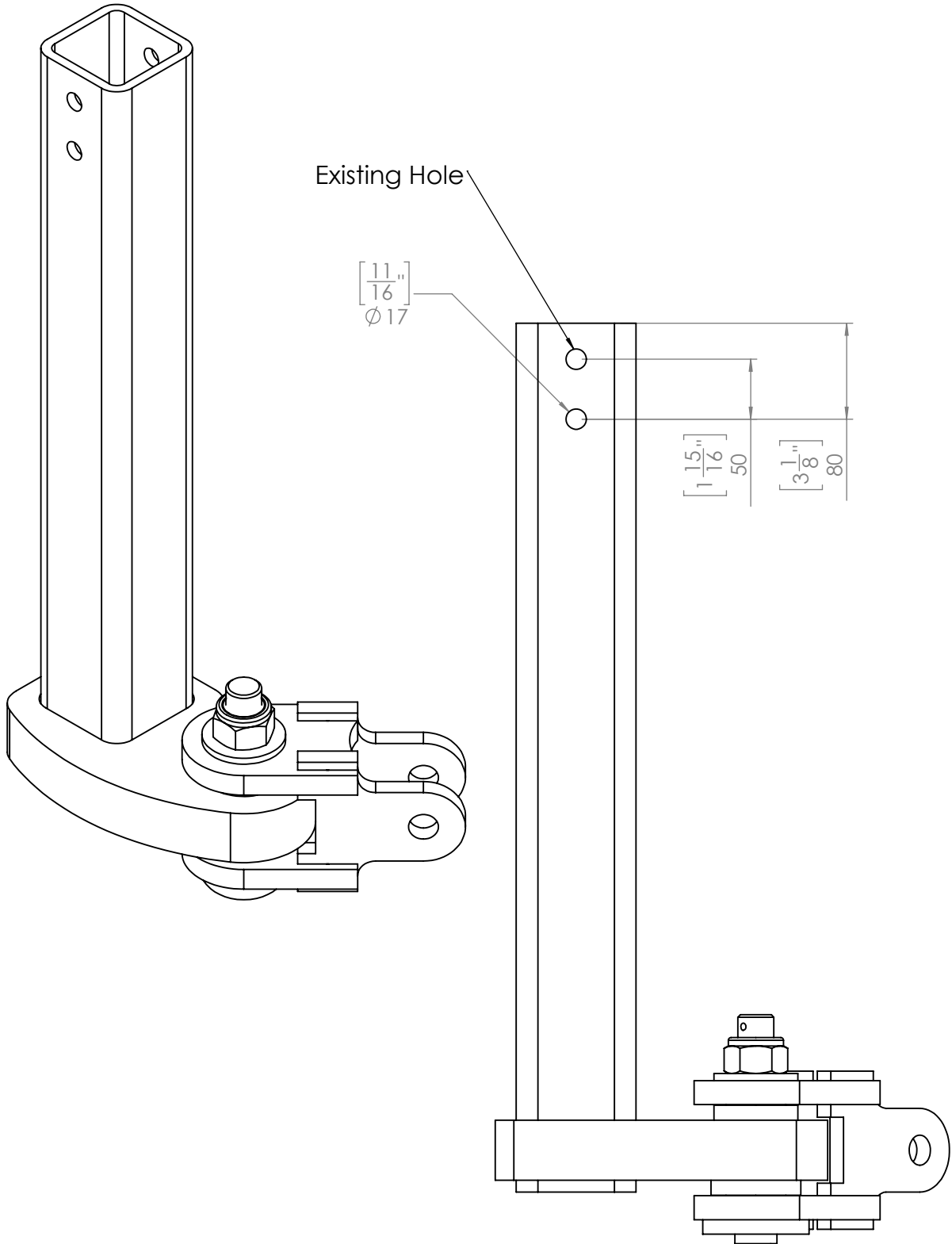


**STEP 11:** Drill a new hole in the front dropleg at the dimensions shown below.

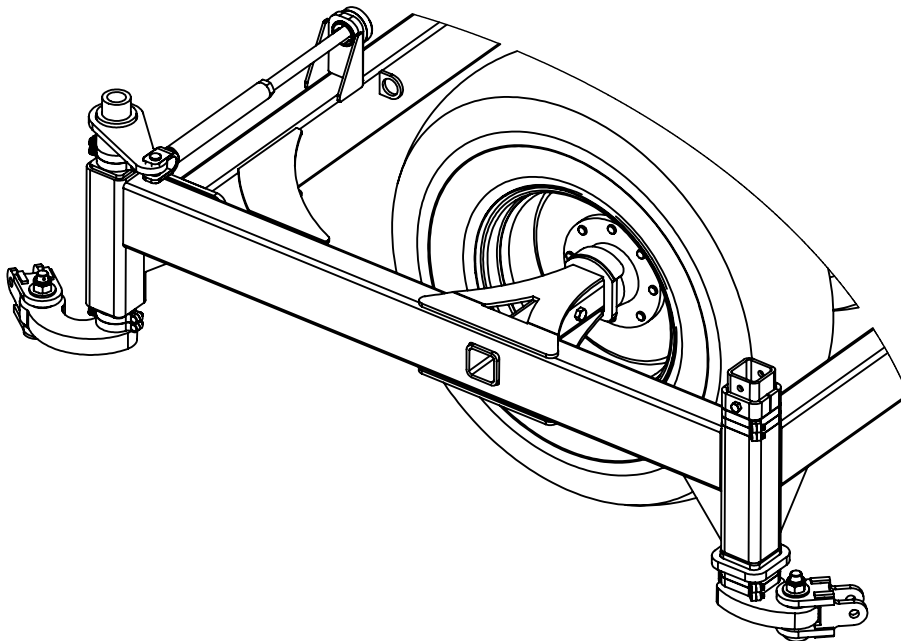




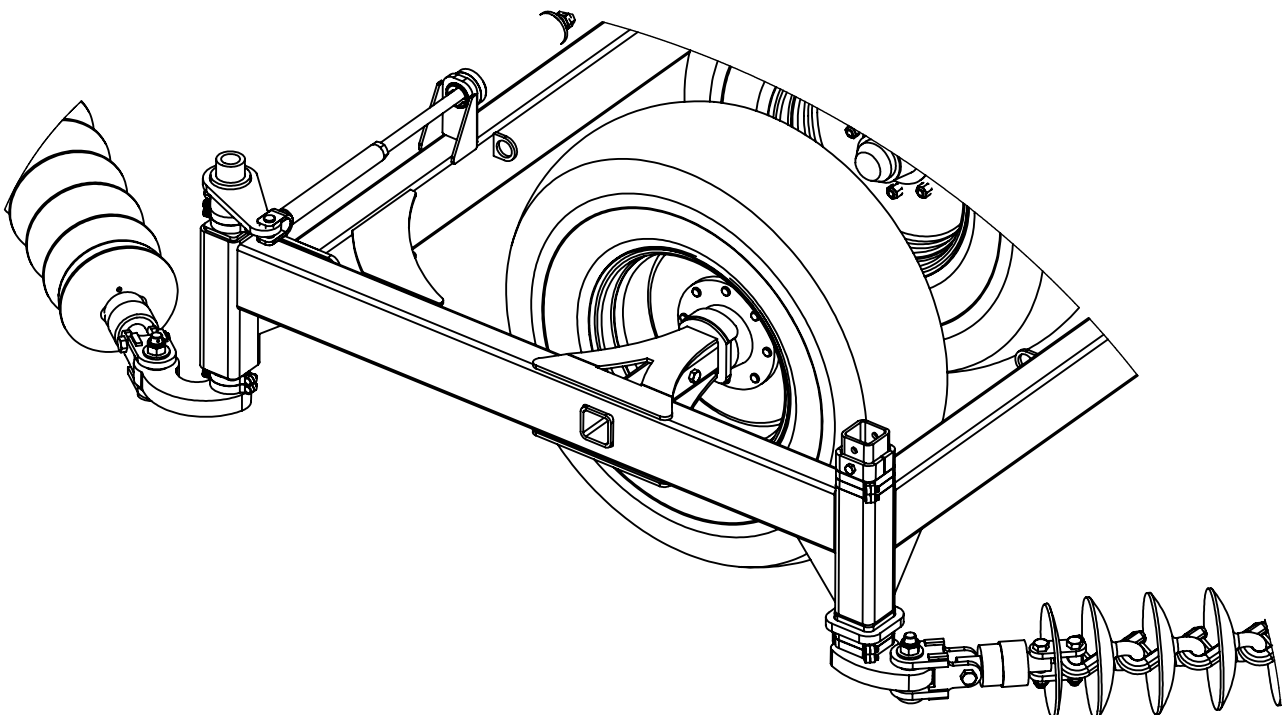
**STEP 12:** Drill a new hole in the rear dropleg at the dimensions shown below.



**STEP 13:** Reinstall the droplegs and chain tensioner using the new bolt hole locations drilled in the last two steps shown below.



**STEP 13:** Reinstall the chain swivels and retension chain shown below.



**STEP 14:** Repeat the procedure on the other side on the machine.